

School Routes Analysis

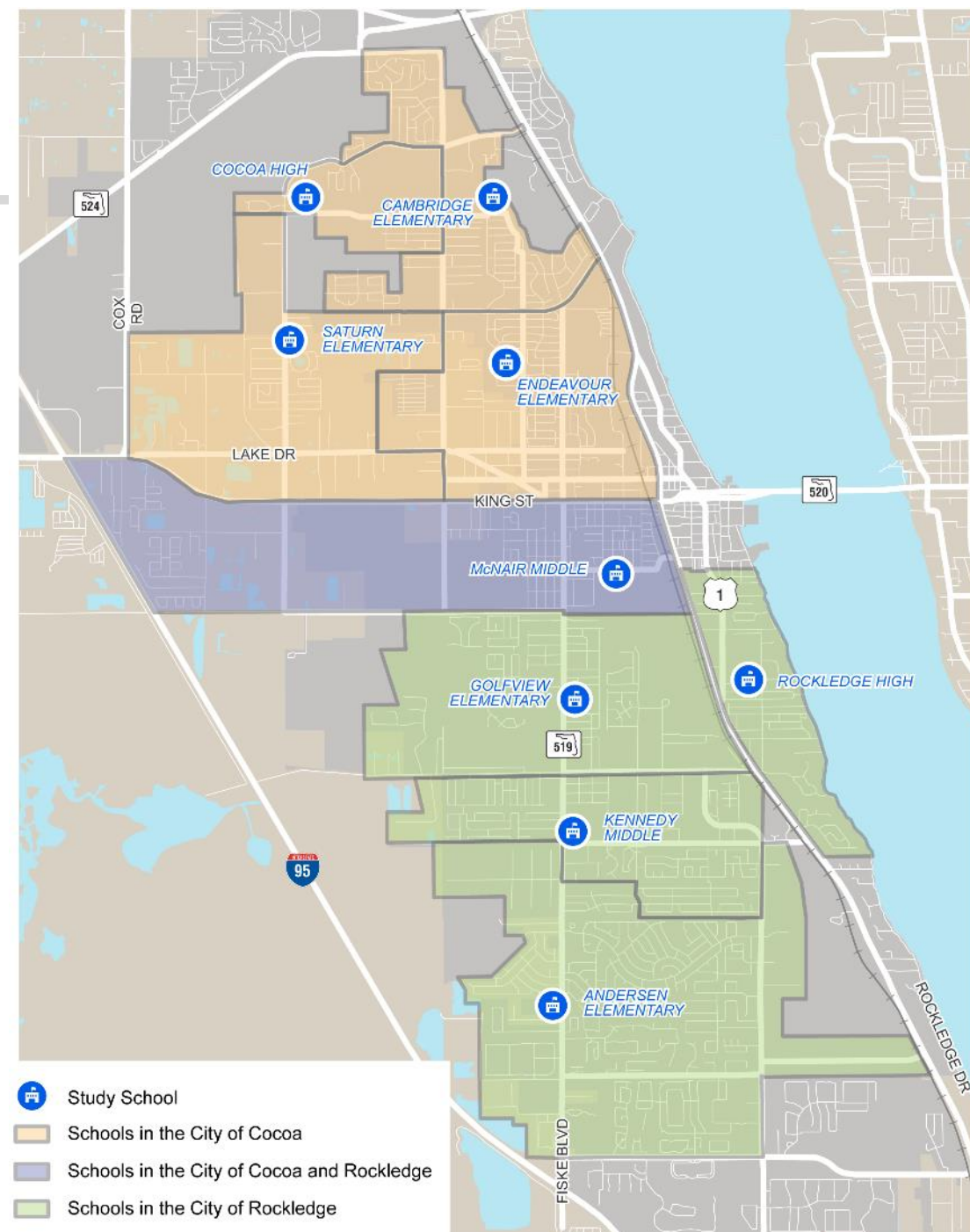


Cocoa
City Council
Meeting

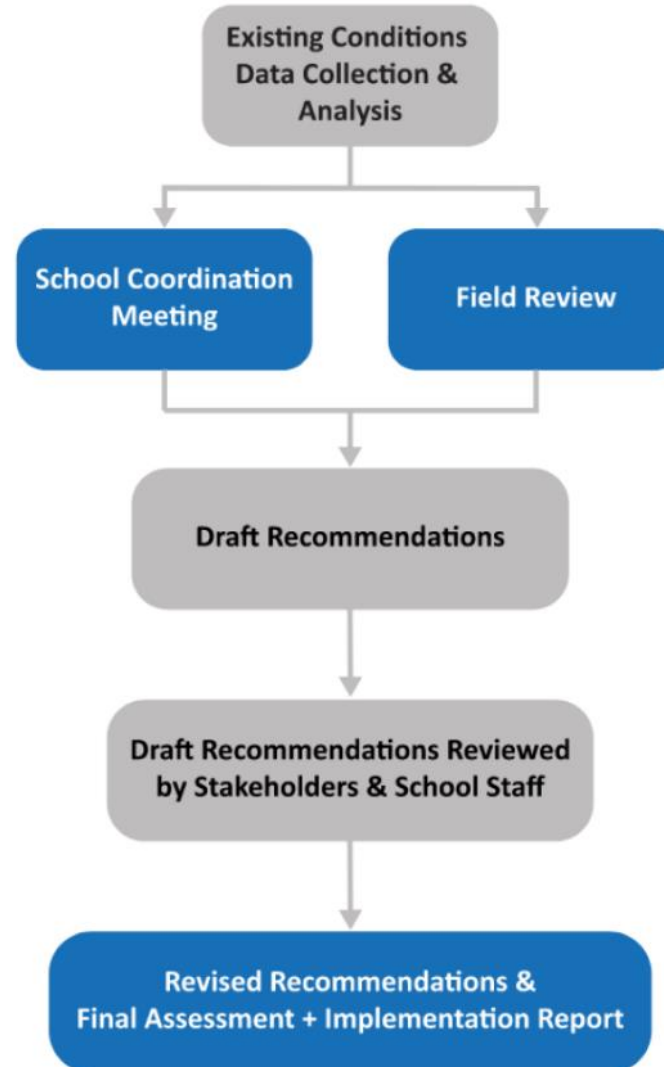
April 9, 2024

PROJECT OVERVIEW

- School Routes Analysis Purpose – Identify Safe Routes to School projects to improve bicyclist, pedestrian, and driver **safety** and **mobility**
- Conducted initial 2019/2020 School Routes Analyses in Melbourne and Palm Bay
- Cocoa/Rockledge – 9 total schools, 5 of which are in Cocoa



STUDY PROCESS



SCHOOL COORDINATION MEETINGS AND FIELD REVIEWS

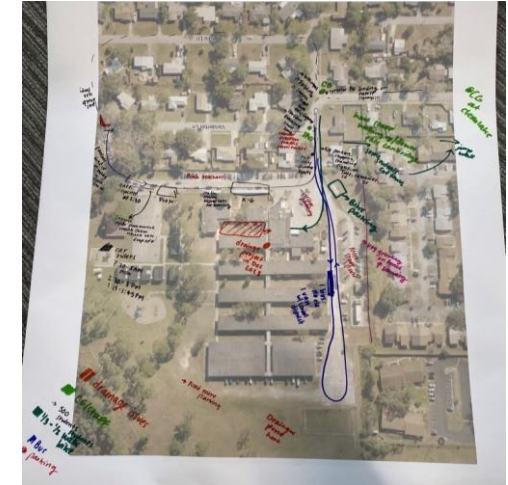
School Coordination

Meetings:

- Verify existing conditions data
- Gather additional information
- Identify issues and opportunities

Field Reviews:

- Review walking and bicycling routes
- Observe traffic and drop-off/pick-up activity
- Verify existing conditions data



GENERAL RECOMMENDATIONS

Study Area:

- Fill sidewalk gaps and reconstruct sidewalk segments that do not meet current standards
- Add or restripe high visibility crosswalks within study areas
- Add flashing beacon signage for existing school zones, restripe pavement markings, and add school zone advance warning signs
- Add Rectangular Rapid Flashing Beacon (RRFB) signage to increase visibility of pedestrian and bicyclist crossings at midblock crossings
- Install/upgrade pedestrian ramps to meet current standards

Enforcement:

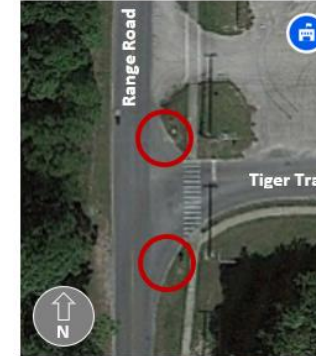
- Additional crossing guards to help manage traffic during drop-off/pick-up times



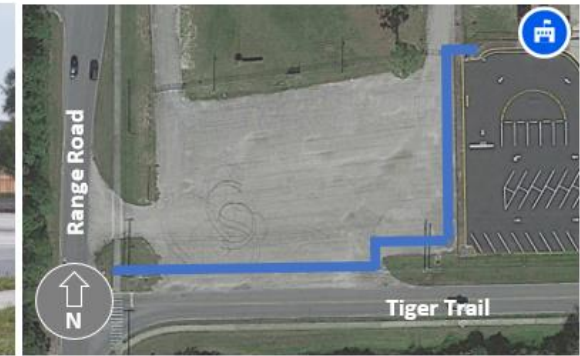
Cocoa High School

School Specific Recommendations:

- Conduct speed studies on Tiger Trail/Rosetine Street, Range Road, and Cocoa Bay Boulevard, and if justified, implement raised intersections and/or raised midblock crossings
- Construct sidewalk and reduce driveway width at southwest corner of school campus
- Tighten turning radii at Tiger Trail & Range Road to reduce vehicle turning speeds
- Conduct a traffic signal operation review to improve pedestrian crossing safety at Tiger Trail & SR 501 (Clearlake Road)



Large Turning Radii at Tiger Trail & Range Road



Students Biking through Band Practice Area and Proposed Sidewalks



Reduce Driveway Width at Southwest Corner of School Campus

Project Type	Number of Projects
Crossing	2
Roadway	1
School Circulation	2
Sidewalk/Bicycle Facility	4
Sign/Signal	4
Traffic Calming	2
Maintenance	1
TOTAL	16

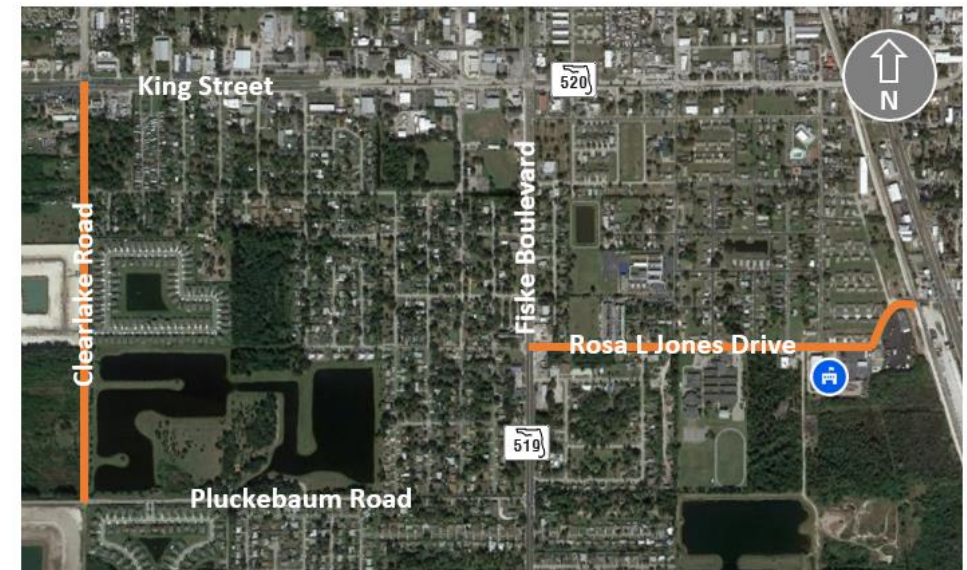
McNair Middle School

School Specific Recommendations:

- Reorient school circulation patterns on campus by restricting access at the eastern driveway to only allow buses to enter
- Conduct speed study and if justified, implement speed humps along Rosa L Jones Drive
- Fill bicycle facility gaps on Rosa L Jones Drive and SR 501 (Clearlake Road)



Project Type	Number of Projects
Crossing	3
Enforcement	1
Roadway	3
School Circulation	2
Sidewalk/Bicycle Facility	2
Sign/Signal	3
Traffic Calming	1
Maintenance	1
TOTAL	16

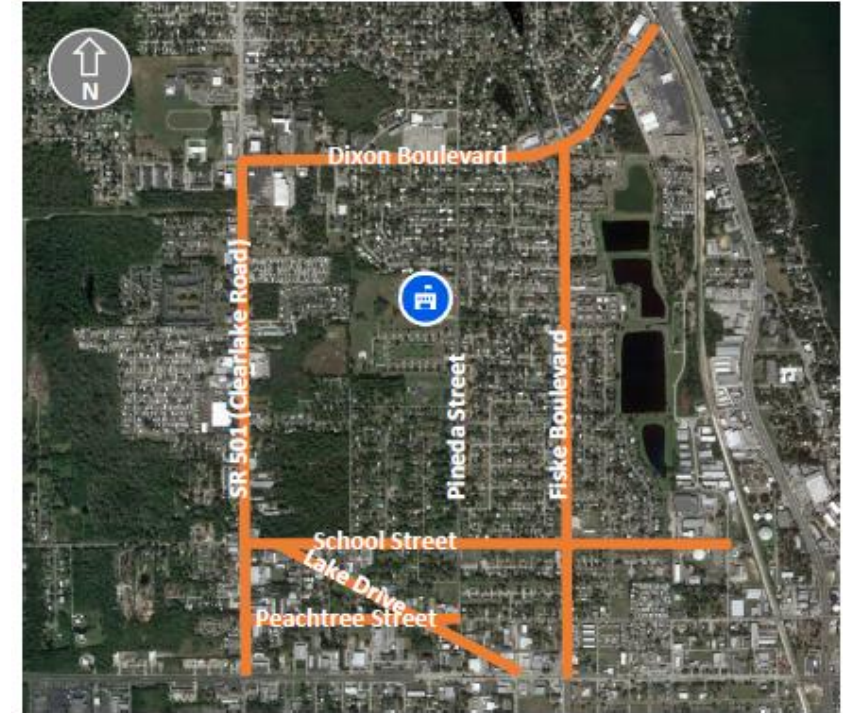


Proposed Bicycle Facility along Clearlake Road and Rosa L Jones Drive

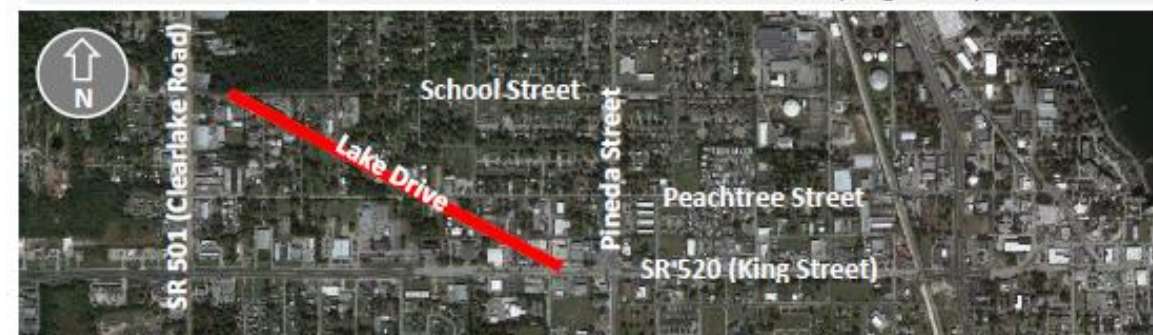
Endeavour Elementary School

School Specific Recommendations:

- Conduct a speed study on Pineda Street from Peachtree Street to Dixon Boulevard, and if justified, implement speed humps, raised intersections, and/or raised crossings
- Fill bicycle facility gaps prioritized in the 2019 SCTPO Bicycle & Pedestrian Master Plan on School Street, Lake Drive, Fiske Boulevard, and Peachtree Street
- Conduct a corridor planning study along Lake Drive to improve bicyclist and pedestrian safety and mobility with an Intersection Control Evaluation (ICE) study at Lake Drive & School Street, Lake Drive & Dora Street/Fern Street, Lake Drive & Peachtree Street, and Lake Drive & Varr Avenue & SR 520 (King Street)



Bicycle Gap Locations in the Study Area



Corridor Planning Study Area

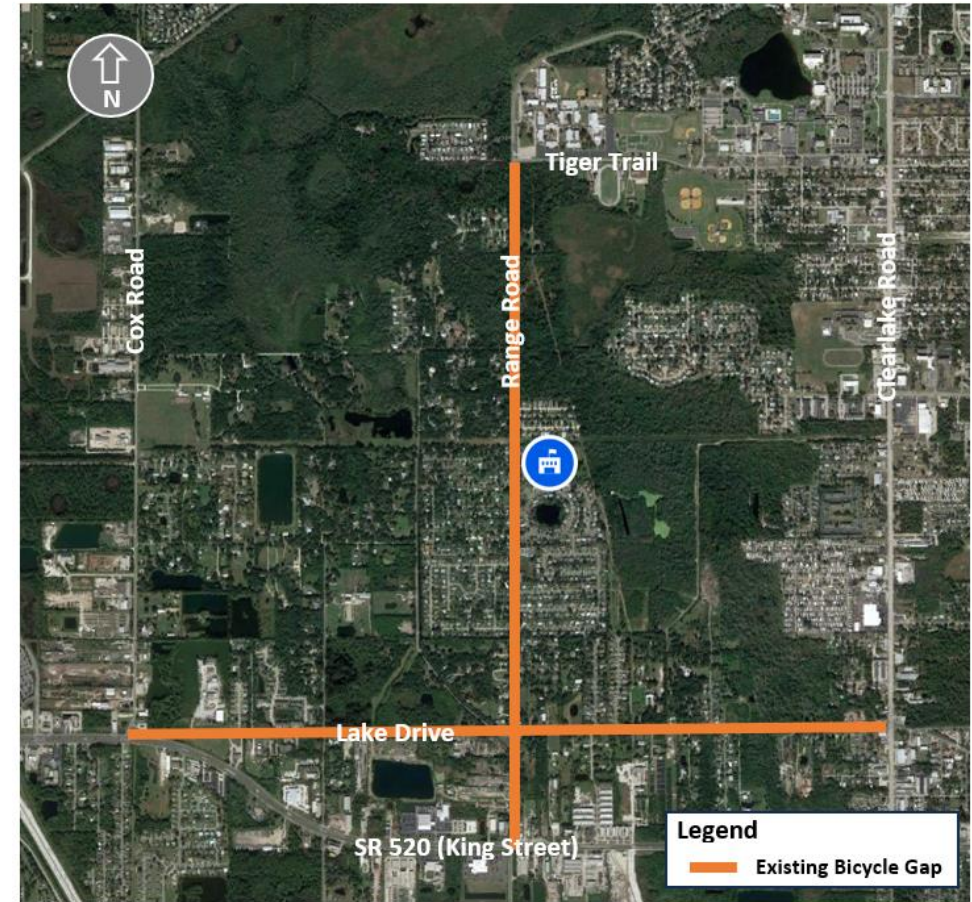
Project Type	Number of Projects
Crossing	1
Enforcement	1
Roadway	1
Sidewalk/Bicycle Facility	5
Sign/Signal	2
Traffic Calming	1
Maintenance	1
TOTAL	12

Saturn Elementary School

School Specific Recommendations:

- Fill bicycle facility gaps prioritized in the 2019 SCTPO Bicycle & Pedestrian Master Plan along Range Road and Lake Drive
- Reorient school circulation by flipping the car loop to the south side of the school and the bus loop to be on the north side
- Create a continuous school zone on Range Road from Diane Drive to Delys Street and add school zone pavement markings

Project Type	Number of Projects
Crossing	1
Roadway	0
School Circulation	1
Sidewalk/Bicycle Facility	3
Sign/Signal	2
Maintenance	2
TOTAL	9



Prioritized Bicycle Facility Gaps

Cambridge Elementary School

School Specific Recommendations:

- Conduct a speed study along Pineda Street and Point Drive/Cambridge Drive and if justified, implement speed humps and/or raised crossings/intersections
- Reconstruct speed bumps on school campus
- Update stop signage and restripe stop bars and markings on school campus



Student Crossing Pineda Street



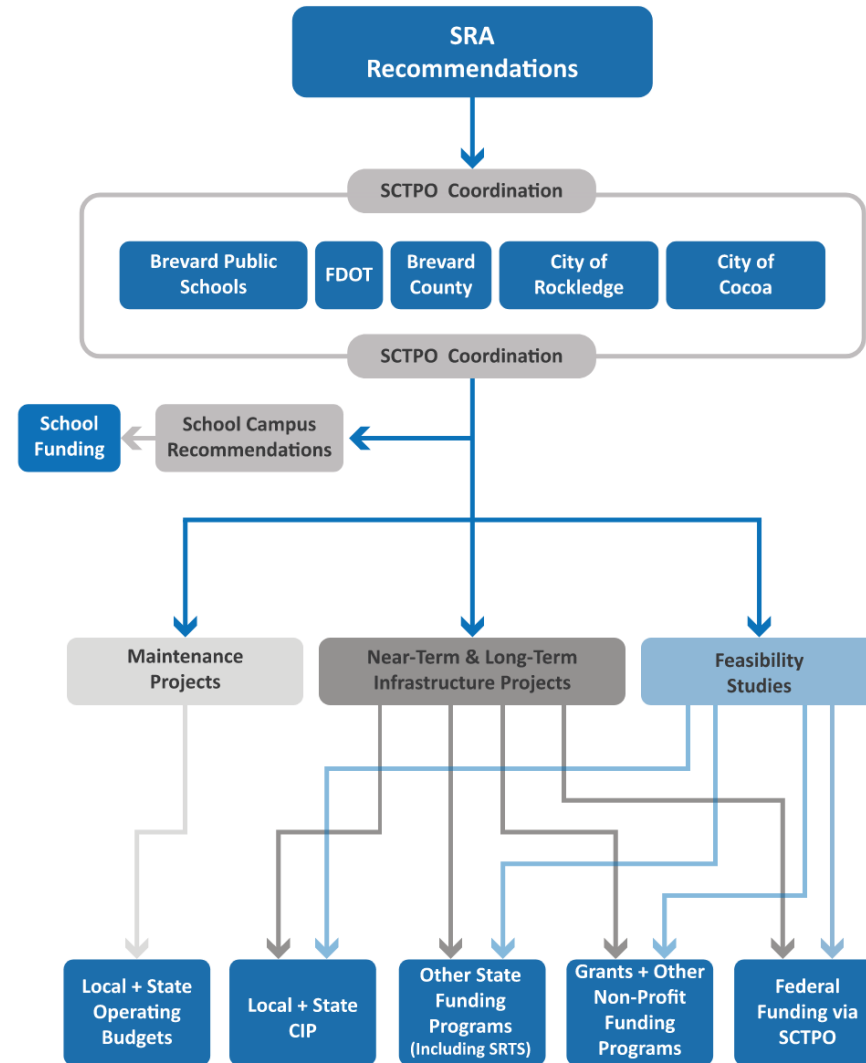
Example of Raised Crossings

Project Type	Number of Projects
Crossing	1
Enforcement	1
Roadway	1
Sidewalk/Bicycle Facility	3
Sign/Signal	2
Traffic Calming	1
Maintenance	2
TOTAL	11

ASSESSMENT & IMPLEMENTATION AND GRAPHICAL SUMMARY REPORTS



NEXT STEPS



Framework for Implementing SRA Recommendations



Debbie Flynn

Project Manager –
Space Coast Transportation Planning Organization

Debbie.Flynn@sctpo.com

Space Coast TPO
2725 Judge Fran Jamieson Way
Bldg. B, Room 105
Melbourne, FL 32940
Tel: (321) 690-6890



Travis Hills, PE, RSP₁

Project Manager –
Kittelison & Associates, Inc.

thills@Kittelison.com

Kittelison & Associates Inc.
225 E Robinson Street
Suite 355
Orlando, FL 32801
Tel: (407) 540-0555