

# WINDWARD PRESERVE

LYING IN SECTION 10, TOWNSHIP 24 SOUTH, RANGE 35 EAST, CITY OF COCOA, BREVARD COUNTY, FLORIDA

## LEGAL DESCRIPTION:

A PARCEL OF LAND LYING IN SECTION 10, TOWNSHIP 24 SOUTH, RANGE 35 EAST, BREVARD COUNTY, FLORIDA, DESCRIBED AS FOLLOWS:

COMMENCE AT THE SOUTH 1/4 CORNER OF SECTION 10, TOWNSHIP 24 SOUTH, RANGE 35 EAST, BREVARD COUNTY, FLORIDA, RUN THENCE NORTH 00°15'06" WEST, A DISTANCE OF 50.00 FEET, TO A POINT ON THE NORTH RIGHT-OF-WAY LINE OF JAMES ROAD, A 50 FOOT DEDICATED STREET, THENCE NORTH 89°44'07" WEST, ALONG SAID NORTH RIGHT-OF-WAY LINE OF JAMES ROAD, A DISTANCE OF 2113.38 FEET, TO A POINT ON THE EASTERLY RIGHT-OF-WAY LINE OF STATE ROAD NO. 9 (INTERSTATE 95), THENCE NORTH 18°18'53" WEST ALONG THE SAID EAST RIGHT-OF-WAY LINE OF STATE ROAD 9 (INTERSTATE 95), A DISTANCE OF 109.59 FEET TO A POINT OF CURVATURE OF A CURVE CONCAVE TO THE EAST, HAVING A RADIUS OF 3725.72 FEET, A CENTRAL ANGLE OF 18°07'00", THENCE NORTHWESTERLY ALONG THE ARC OF SAID CURVE A DISTANCE OF 1178.06 FEET, THENCE NORTH 00°11'53" WEST, A DISTANCE OF 205.36 FEET, TO A POINT ON THE SOUTHERLY RIGHT-OF-WAY LINE OF STATE ROAD NO. 528 (ALSO KNOWN AS THE "BEELINE EXPRESSWAY" FORMERLY KNOWN AS STATE ROAD NO. 524) AND A POINT OF CURVATURE OF A CURVE CONCAVE TO THE EAST, HAVING A RADIUS OF 600.49 FEET A CENTRAL ANGLE OF 56°36'47", THENCE NORTHEASTERLY ALONG THE ARC OF SAID CURVE A DISTANCE OF 593.34 FEET, THENCE NORTH 56°24'54" EAST, A DISTANCE OF 1093.61 FEET, TO A POINT OF CURVATURE OF A CURVE CONCAVE TO THE SOUTHEAST, HAVING A RADIUS OF 600.49 FEET, A CENTRAL ANGLE OF 32°11'38", THENCE NORTHEASTERLY ALONG THE ARC OF SAID CURVE, A DISTANCE OF 337.41 FEET, THENCE NORTH 88°36'31" EAST, A DISTANCE OF 1179.23 FEET TO A POINT OF CURVATURE OF A CURVE CONCAVE TO THE SOUTH, HAVING A RADIUS OF 5579.58 FEET, A CENTRAL ANGLE OF 16°24'08", THENCE SOUTHEASTERLY ALONG THE ARC OF SAID CURVE A DISTANCE OF 1597.28 FEET, THENCE SOUTH 74°59'21" EAST A DISTANCE OF 774.87 FEET, TO A POINT ON THE EAST LINE OF SAID SECTION 10, THENCE SOUTH 00°04'36" EAST ALONG THE EAST LINE OF SAID SECTION 10, A DISTANCE OF 1056.66 FEET, THENCE NORTH 89°52'22" WEST, A DISTANCE OF 668.67 FEET, THENCE SOUTH 00°07'14" EAST, A DISTANCE OF 1273.27 FEET, TO A POINT ON THE AFOREMENTIONED JAMES ROAD, A 50 FEET DEDICATED STREET, THENCE NORTH 89°51'39" WEST, ALONG SAID NORTH RIGHT-OF-WAY LINE A DISTANCE OF 2003.09 FEET, TO THE POINT OF BEGINNING.

LESS AND EXCEPT THAT PARCEL CONVEYED BY ORDER OF TAKING IN THE STATE OF FLORIDA DEPARTMENT OF TRANSPORTATION RECORDED FEBRUARY 8, 2008 IN OFFICIAL RECORDS BOOK 5843, PAGE 351, OF THE PUBLIC RECORDS OF BREVARD COUNTY, FLORIDA.

AND ALSO LESS AND EXCEPT LANDS DESCRIBED IN DEEDS TO BREVARD COUNTY PROPERTY HOLDINGS, LLC AS RECORDED IN OFFICIAL RECORDS BOOK 7000, PAGE 2377 AND OFFICIAL RECORDS BOOK 7434, PAGE 1216 OF THE PUBLIC RECORDS OF BREVARD COUNTY, FLORIDA.

CONTAINS 212.10 ACRES, MORE OR LESS.

## LOCATION MAP: NOT TO SCALE



NOTICE: THIS PLAT, AS RECORDED IN ITS GRAPHIC FORM, IS THE OFFICIAL DEPICTION OF THE SUBDIVIDED LAND DESCRIBED HEREIN AND WILL IN NO CIRCUMSTANCES BE SUPPLANTED IN AUTHORITY BY ANY OTHER GRAPHIC OR DIGITAL FORM OF THE PLAT. THERE MAY BE ADDITIONAL RESTRICTIONS THAT ARE FOUND IN THE PUBLIC RECORDS OF THE COUNTY.

## SURVEYOR'S NOTES

- BEARINGS SHOWN HEREON ARE BASED ON NAD 83, FLORIDA STATE PLANE, EAST ZONE WITH THE REFERENCE BEARING BEING THE EAST LINE OF SECTION 10-24-35 AS BEING SOUTH 00°04'37" EAST.
- PRIVATE EASEMENTS GRANTED TO OR OBTAINED BY A PARTICULAR ELECTRIC, TELEPHONE, GAS OR OTHER PUBLIC UTILITY, SHALL ALSO BE EASEMENTS FOR THE CONSTRUCTION, INSTALLATION, MAINTENANCE, AND OPERATION OF CABLE TELEVISION SERVICES; PROVIDED HOWEVER, NO SUCH CONSTRUCTION, INSTALLATION, MAINTENANCE AND OPERATIONS OF CABLE TELEVISION SERVICES SHALL INTERFERE WITH THE FACILITIES AND SERVICES OF AN ELECTRIC, TELEPHONE, GAS OR OTHER PUBLIC UTILITY. IN THE EVENT A CABLE TELEVISION COMPANY DAMAGES THE FACILITIES OF A PUBLIC UTILITY, IT SHALL BE SOLELY RESPONSIBLE FOR THE DAMAGES PURSUANT TO SECTION 177.091(28), FLORIDA STATUTES. SUCH CONSTRUCTION, INSTALLATION, MAINTENANCE AND OPERATION SHALL COMPLY WITH THE NATIONAL ELECTRICAL SAFETY CODE AS ADOPTED.
- ALL PLATTED UTILITY EASEMENTS SHALL PROVIDE THAT SUCH EASEMENTS SHALL ALSO BE EASEMENTS FOR THE CONSTRUCTION, INSTALLATION, MAINTENANCE, AND OPERATION OF CABLE TELEVISION SERVICES; PROVIDED, HOWEVER, NO SUCH CONSTRUCTION, INSTALLATION, MAINTENANCE, AND OPERATION OF CABLE TELEVISION SERVICES SHALL INTERFERE WITH THE FACILITIES AND SERVICES OF AN ELECTRIC, TELEPHONE, GAS, OR OTHER PUBLIC UTILITY. IN THE EVENT A CABLE TELEVISION COMPANY DAMAGES THE FACILITIES OF A PUBLIC UTILITY, IT SHALL BE SOLELY RESPONSIBLE FOR THE DAMAGES.
- TRACT A IS A RIGHT-OF-WAY TRACT AND SHALL BE OWNED AND MAINTAINED BY THE WINDWARD PRESERVE HOMEOWNERS ASSOCIATION, INC., A FLORIDA NOT-FOR-PROFIT CORPORATION (THE "ASSOCIATION"). THE PLAT SHALL ACT AS CONVEYANCE.
- TRACT LB1, TRACT LB2, TRACT LB3, TRACT LB4 AND TRACT LB5 ARE BUFFER TRACTS AND SHALL BE OWNED AND MAINTAINED BY THE WINDWARD PRESERVE HOMEOWNERS ASSOCIATION, INC., A FLORIDA NOT-FOR-PROFIT CORPORATION (THE "ASSOCIATION"). THE PLAT SHALL ACT AS CONVEYANCE.
- TRACT B, TRACT C AND TRACT D ARE OPEN SPACE TRACTS AND SHALL BE OWNED AND MAINTAINED BY THE WINDWARD PRESERVE HOMEOWNERS ASSOCIATION, INC., A FLORIDA NOT-FOR-PROFIT CORPORATION (THE "ASSOCIATION") THE PLAT SHALL ACT AS CONVEYANCE.
- TRACT F IS AN AMENITY/RECREATION TRACT AND SHALL BE OWNED AND MAINTAINED BY THE WINDWARD PRESERVE HOMEOWNERS ASSOCIATION, INC., A FLORIDA NOT-FOR-PROFIT CORPORATION (THE "ASSOCIATION"). THE PLAT SHALL ACT AS CONVEYANCE.
- TRACT E, TRACT H, TRACT I, TRACT J, TRACT K, TRACT L AND TRACT M ARE STORMWATER AREA AND OPEN SPACE TRACTS AND SHALL BE OWNED AND MAINTAINED BY THE WINDWARD PRESERVE HOMEOWNERS ASSOCIATION, INC., A FLORIDA NOT-FOR-PROFIT CORPORATION (THE "ASSOCIATION"). THE PLAT SHALL ACT AS CONVEYANCE.
- TRACT G IS A PARK TRACT AND SHALL BE OWNED AND MAINTAINED BY THE WINDWARD PRESERVE HOMEOWNERS ASSOCIATION, INC., A FLORIDA NOT-FOR-PROFIT CORPORATION (THE "ASSOCIATION"). THE PLAT SHALL ACT AS CONVEYANCE.
- TRACT N IS A LIFT STATION TRACT AND SHALL BE OWNED AND MAINTAINED BY THE CITY OF COCOA.
- TRACT W1, TRACT W2, TRACT W3/W4 AND TRACT W5 ARE WETLAND TRACTS, AND THE WETLAND BUFFERS SHALL BE OWNED AND MAINTAINED BY THE WINDWARD PRESERVE HOMEOWNERS ASSOCIATION, INC., A FLORIDA NOT-FOR-PROFIT CORPORATION (THE "ASSOCIATION"). THE PLAT SHALL ACT AS CONVEYANCE.
- THE SUBJECT PROPERTY LIES WITHIN FLOOD ZONE "A" (SPECIAL FLOOD HAZARD AREA WITHOUT BASE FLOOD ELEVATION) AND ZONE "X" (AREA OF MINIMAL FLOOD HAZARD) PER FEMA FLOOD MAP NUMBER 12009C0320H WITH A REVISION DATE OF 1/29/2021.
- THE CITY OF COCOA, FLORIDA, BREVARD COUNTY, FLORIDA, THE STATE OF FLORIDA, AND THE FEDERAL GOVERNMENT OF THE UNITED STATES OF AMERICA SHALL BE ALLOWED ACCESS ON THE PRIVATE DRIVES, PEDESTRIAN WAYS, EASEMENTS, AND COMMON OPEN SPACES TO ENSURE AND PROVIDE FOR THE POLICE AND FIRE PROTECTION OF THE AREA, THE INSTALLATION AND MAINTENANCE OF PUBLIC UTILITIES, AND FOR INGRESS AND EGRESS FOR LAW ENFORCEMENT AND EMERGENCY VEHICLES, MAIL AND PACKAGE DELIVERY, SOLID WASTE/SANITATION, AND OTHER SIMILAR GOVERNMENTAL AND QUASI-GOVERNMENTAL SERVICES, AND TO ENSURE THE HEALTH, WELFARE, AND SAFETY OF THE RESIDENTS AND GUESTS OF RESIDENTS.
- AT THE TIME OF RECORDING, THIS PLAT IS SUBJECT TO THE FOLLOWING:
  - ORDINANCE NO. 31-2004 RECORDED AUGUST 31, 2004 IN OFFICIAL RECORDS BOOK 5355, PAGE 2621, AS AFFECTED BY STIPULATED AGREEMENT RECORDED JANUARY 9, 2008 IN OFFICIAL RECORDS BOOK 5837, PAGE 2226 AFFECTS SUBJECT PROPERTY BUT IS BLANKET IN NATURE AND NOT PLOTTABLE.
  - PRECEDING DEVELOPMENT AGREEMENT RECORDED APRIL 28, 2005 IN OFFICIAL RECORDS BOOK 5458, PAGE 5467, AS AFFECTED BY PRECEDING DEVELOPMENT AGREEMENT SECOND AMENDED DEVELOPMENT AGREEMENT RECORDED NOVEMBER 21, 2006 IN OFFICIAL RECORDS BOOK 5721, PAGE 8205; ORDINANCE NO. 10-2005 RECORDED NOVEMBER 5, 2007 OF OFFICIAL RECORDS BOOK 5823, PAGE 798; AND ASSIGNMENT OF DEVELOPMENT RIGHTS TO BEACHLINE PARTNERS, LLC, A FLORIDA LIMITED LIABILITY COMPANY RECORDED JULY 14, 2021 IN OFFICIAL RECORDS BOOK 9189, PAGE 1053; SETTLEMENT IMPLEMENTATION AGREEMENT RECORDED IN OFFICIAL RECORDS BOOK 9571, PAGE 2808 AFFECTS SUBJECT PROPERTY BUT IS BLANKET IN NATURE AND NOT PLOTTABLE.
- THERE IS A 10.00' WIDE PUBLIC UTILITY EASEMENT ALONG THE FRONT AND REAR LOT LINES. THERE IS A 5.00' WIDE PUBLIC UTILITY EASEMENT ALONG THE SIDE LOT LINES.
- THE CITY OF COCOA AND BREVARD COUNTY SHALL HAVE THE RIGHT, BUT NOT THE OBLIGATION, TO ACCESS, MAINTAIN, REPAIR, REPLACE OR OTHERWISE CARE FOR OR CAUSE TO BE CARED FOR, THE DRAINAGE EASEMENTS AND STORMWATER TRACTS SHOWN ON THIS PLAT, INCLUDING WITHOUT LIMITATION THE DRAINAGE SYSTEMS CONSTRUCTED THEREON, AND THE UNDERGROUND STORMWATER DRAINAGE PIPES AND ABOVE GROUND INLET STRUCTURES TO BE CONSTRUCTED IN OR ON SUCH DRAINAGE EASEMENTS AND STORMWATER TRACTS IN THE EVENT OF AN EMERGENCY AND IS GRANTED AN EASEMENT FOR SUCH PURPOSES. TO THE EXTENT THAT THE CITY OR COUNTY OPTS TO MAINTAIN, REPAIR, REPLACE, OR OTHERWISE CARE FOR OR CAUSE TO BE CARED FOR, THE DRAINAGE EASEMENTS AND STORMWATER TRACTS SHOWN ON THIS PLAT, AND THE DRAINAGE SYSTEMS CONSTRUCTED THEREON, THE FREQUENCY, QUALITY OR EXTENT OF SUCH MAINTENANCE, REPAIR, REPLACEMENT, AND CARE WILL BE SUBJECT TO THE CITY OR COUNTY'S DISCRETION. A BLANKET INGRESS/EGRESS EASEMENT IS GRANTED IN FAVOR OF THE CITY OF COCOA AND BREVARD COUNTY FOR SAID PURPOSE OVER THE STORMWATER TRACTS SHOWN ON THIS PLAT.
- THE PROPERTY IN THIS PLAT IS SUBJECT TO THE COMMUNITY DECLARATION FOR WINDWARD PRESERVE TO BE RECORDED IN THE OFFICIAL RECORDS OF BREVARD COUNTY FLORIDA, AND ANY SUPPLEMENT AND/OR AMENDMENT(S) THERETO. THE PUBLIC EASEMENTS CONTAINED IN THE COMMUNITY DECLARATION FOR WINDWARD PRESERVE ARE HEREBY DEDICATED TO THE PUBLIC.
- THERE MAY BE EASEMENTS REFERENCED IN THE DECLARATION OF COVENANTS, CONDITIONS, RESTRICTIONS AND EASEMENTS FOR WINDWARD PRESERVE (THE "DECLARATION") THAT ARE NOT SHOWN ON THE PLAT. THE DECLARATION WILL BE RECORDED IN THE PUBLIC RECORDS AS PART OF THE PLAT PROCESS AND SHOULD BE REVIEWED FOR INFORMATION ON ANY ADDITIONAL EASEMENTS.
- CONSERVATION EASEMENTS OVER THE WETLANDS TRACTS AND WETLAND BUFFERS SHALL BE DEDICATED TO THE CITY OF COCOA AS RECORDED IN OFFICIAL RECORDS BOOK \_\_\_\_\_, PAGES \_\_\_\_\_

JOINDERS RECORDED AT:  
O.R. BOOK \_\_\_\_\_ PAGE \_\_\_\_\_  
COVENANTS/RESTRICTIONS RECORDED AT:  
O.R. BOOK \_\_\_\_\_ PAGE \_\_\_\_\_

## WINDWARD PRESERVE DEDICATION

KNOW ALL MEN BY THESE PRESENTS, that the Grantor named below, being the owner in fee simple of the lands described in hereby dedicates said lands and plat for the uses and purposes therein expressed and dedicates to the perpetual use of the public and to the City of Cocoa, Florida, all easements specifically designated hereon and in the plat notes as public. The owner further hereby dedicates to the public and the City of Cocoa, Florida, a perpetual public easement over and across the private rights-of-way of Tract A for installation and maintenance of public utilities and for ingress and egress for law enforcement and emergency vehicles, mail and package delivery, solid waste/sanitation, and other similar governmental and quasi-governmental services. Tract A and private drainage facilities within the subdivision shall not be dedicated to, nor the responsibility of, the City of Cocoa, Florida.

IN WITNESS WHEREOF  
TAYLOR MORRISON OF FLORIDA, Inc., a Florida corporation  
has caused these presents to be signed and attested to by the officers named below and its corporate seal affixed hereto on

By \_\_\_\_\_ Date \_\_\_\_\_  
Heather Isaacs, Vice President

TAYLOR MORRISON OF FLORIDA, Inc., a Florida corporation  
2600 Lake Lucien Drive, Suite 350  
Maitland, Florida 32751

Signed and sealed in the presence of:

WITNESSES:  
\_\_\_\_\_  
\_\_\_\_\_

PRINT NAME: \_\_\_\_\_

PRINT NAME: \_\_\_\_\_

STATE OF FLORIDA,  
COUNTY OF ORANGE

THE FOREGOING INSTRUMENT WAS ACKNOWLEDGED BEFORE ME, BY MEANS OF [ ] PHYSICAL PRESENCE OR [ ] ONLINE NOTARIZATION, THIS \_\_\_\_\_ DAY OF \_\_\_\_\_, 2023, BY HEATHER ISAACS, VICE PRESIDENT OF TAYLOR MORRISON OF FLORIDA, INC., A FLORIDA CORPORATION; SUCH PERSON [ ] IS PERSONALLY KNOWN TO ME OR [ ] HAS PRODUCED \_\_\_\_\_ AS IDENTIFICATION.

SIGNATURE OF PERSON TAKING ACKNOWLEDGMENT

PRINTED NAME: \_\_\_\_\_

COMMISSION EXPIRES: \_\_\_\_\_

COMMISSION NUMBER \_\_\_\_\_

## CERTIFICATE OF APPROVAL BY MUNICIPALITY

THIS IS TO CERTIFY, that on \_\_\_\_\_ the city council of the City of Cocoa, Florida approved the foregoing plat.

\_\_\_\_\_  
Michael C. Blake, Mayor

\_\_\_\_\_  
Carie Shealy, City Clerk

## CERTIFICATE OF SURVEYOR

Known all men by these presents, that the undersigned being a licensed and registered land surveyor and mapper, does hereby certify that on August 14, 2018 he completed the survey of the lands as shown on the foregoing plat; that said plat is a true and correct representation of a survey made under my responsible direction and supervision; that said survey is accurate to the best of my knowledge and belief; that Permanent Reference Monuments (P.R.M.'s) have been placed as required by law, and that Permanent Control Points (P.C.P.'s), and Monuments according to Sec. 177.091(9), F.S., will be set under the guarantees posted with the Brevard County Board of County Commissioners for the required improvements; and, further, that the survey data complies with all the requirements of Chapter 177, Part 1, Florida Statutes, as amended.

\_\_\_\_\_  
Billy Alan Chavers, P.S.M. Registration No. 7086

DALE STOCKSTILL AND ASSOCIATES, L.B. # 8052  
801 INTERNATIONAL PARKWAY, SUITE 500  
LAKE MARY, FL 32746  
PHONE : (407) 926-0333

## CERTIFICATE OF REVIEWING SURVEYOR FOR THE CITY OF COCOA

I HEREBY CERTIFY, That I have reviewed the foregoing plat and find that it is in conformity with Chapter 177, Part 1, Florida Statutes.

\_\_\_\_\_  
Andrew Perry, P.S.M. and Registered Florida Surveyor and Mapper # \_\_\_\_\_

## CERTIFICATE OF CLERK

I HEREBY CERTIFY, That I have examined the foregoing plat and find that it complies in form with all the requirements of Chapter 177, Part 1, Florida Statutes, and was filed for record on

\_\_\_\_\_ at \_\_\_\_\_

File No. \_\_\_\_\_

\_\_\_\_\_  
Clerk of the Circuit Court  
in and for Brevard County, FL

SHEET INDEX  
Sheet 1 of 12 - Surveyor's notes, legal description and dedication  
Sheet 2 of 12 - overall boundary geometry and legend  
Sheets 3 through 12 of 12 - boundary, lot & tract geometry



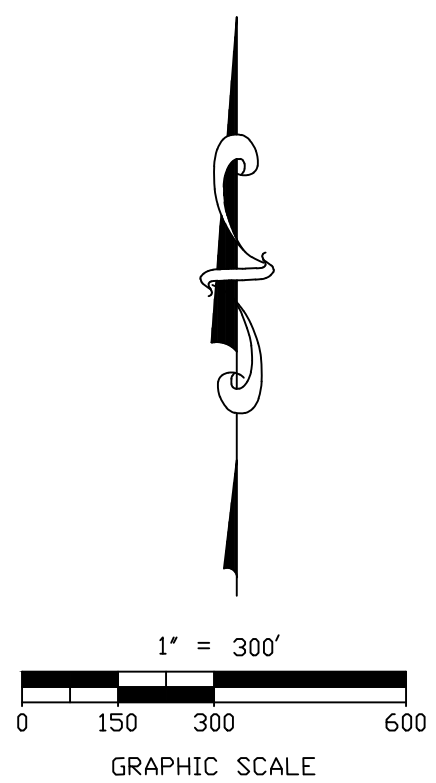
**DALE STOCKSTILL  
& ASSOCIATES, P.A.**  
PROFESSIONAL LAND SURVEYORS

801 International  
Parkway, Ste. 500  
Lake Mary, FL 32746  
407-926-0333

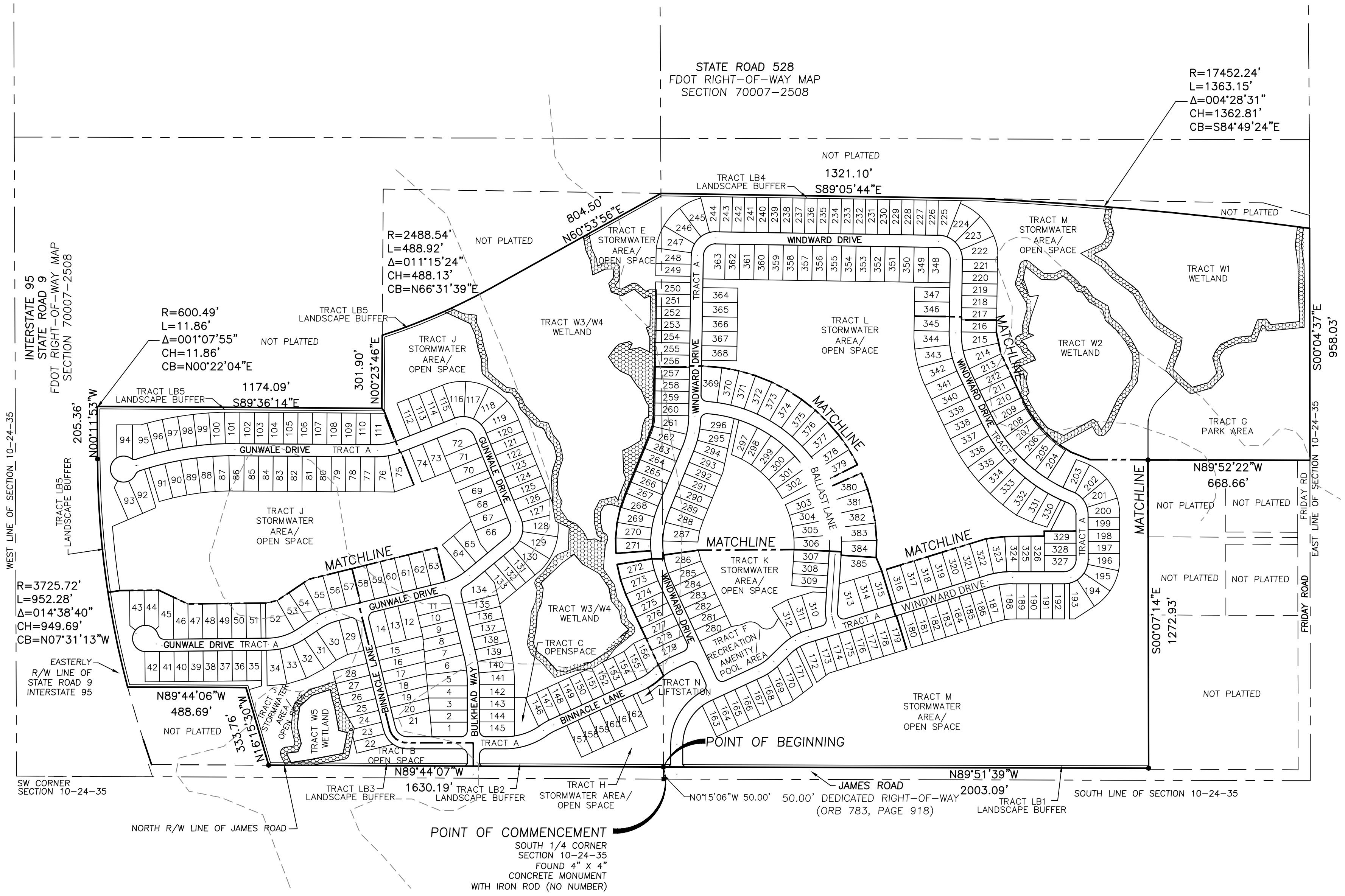


# WINDWARD PRESERVE

LYING IN SECTION 10, TOWNSHIP 24 SOUTH, RANGE 35 EAST, CITY OF COCOA, BREVARD COUNTY, FLORIDA



TRACT TABLE				
TRACT NAME	USE	OWNERSHIP	MAINTENANCE	ACRE (%)
TRACT A	ROW	H.O.A.	H.O.A.	16.31 7.69%
TRACT B	OPEN SPACE	H.O.A.	H.O.A.	0.85 0.40%
TRACT C	OPEN SPACE	H.O.A.	H.O.A.	0.25 0.12%
TRACT D	OPEN SPACE	H.O.A.	H.O.A.	0.24 0.11%
TRACT E	STORMWATER AREA/ OPEN SPACE	H.O.A.	H.O.A.	1.88 0.89%
TRACT F	RECREATION/AMENITY POOL AREA	H.O.A.	H.O.A.	1.26 0.59%
TRACT G	PARK AREA	H.O.A.	H.O.A.	6.28 2.96%
TRACT H	STORMWATER AREA/ OPEN SPACE	H.O.A.	H.O.A.	2.95 1.39%
TRACT I	STORMWATER AREA/ OPEN SPACE	H.O.A.	H.O.A.	2.4 1.13%
TRACT J	STORMWATER AREA/ OPEN SPACE	H.O.A.	H.O.A.	20.4 9.62%
TRACT K	STORMWATER AREA/ OPEN SPACE	H.O.A.	H.O.A.	5.1 2.40%
TRACT L	STORMWATER AREA/ OPEN SPACE	H.O.A.	H.O.A.	15.9 7.50%
TRACT M	STORMWATER AREA/ OPEN SPACE	H.O.A.	H.O.A.	29.79 14.05%
TRACT N	UFT STATION	CITY	CITY	0.06 0.03%
TRACT LB1	LANDSCAPE BUFFER	H.O.A.	H.O.A.	0.44 0.21%
TRACT LB2	LANDSCAPE BUFFER	H.O.A.	H.O.A.	0.17 0.08%
TRACT LB3	LANDSCAPE BUFFER	H.O.A.	H.O.A.	0.13 0.06%
TRACT LB4	LANDSCAPE BUFFER	H.O.A.	H.O.A.	0.5 0.24%
TRACT LB5	LANDSCAPE BUFFER	H.O.A.	H.O.A.	0.87 0.41%
TRACT W1	WETLAND PRESERVATION	H.O.A.	H.O.A.	9.61 4.53%
TRACT W2	WETLAND PRESERVATION	H.O.A.	H.O.A.	6.11 2.88%
TRACT W3/W4	WETLAND PRESERVATION	H.O.A.	H.O.A.	13.6 6.41%
TRACT W5	WETLAND PRESERVATION	H.O.A.	H.O.A.	1.64 0.77%
SINGLE FAMILY LOTS:				75.39 35.54%
TOTAL PROJECT AREA:				212.1 100%



- LEGEND**

  - SET 4"x4" CONCRETE MONUMENT LB #8052
  - SET 5/8" IRC LB #8052
  - IRC IRON ROD AND CAP
  - R/W RIGHT-OF-WAY
  - PB PLAT BOOK
  - NAD 83 NORTH AMERICAN DATUM 1983
  - C CENTERLINE
  - R RADIUS
  - Δ CENTRAL ANGLE
  - L LENGTH
  - CB CHORD BEARING
  - CH CHORD
  - N.R. NON-RADIAL
  - WETLAND BUFFER
- (C) CALCULATED
  - (D) DESCRIBED
  - (M) MEASURED
  - LB LICENSED BUSINESS
  - NTC NON-TANGENT CURVE
  - PC POINT OF CURVATURE
  - NTS NOT TO SCALE
  - FEMA FEDERAL EMERGENCY MANAGEMENT AGENCY
  - FDOT FLORIDA DEPARTMENT OF TRANSPORTATION
  - POB POINT OF BEGINNING
  - POC POINT OF COMMENCEMENT
  - 6" CHAIN LINK FENCE
  - LIMITED ACCESS RIGHT-OF-WAY
  - U.E. UTILITY EASEMENT
  - W.U.E. WALL AND UTILITY EASEMENT



**DALE STOCKSTILL  
& ASSOCIATES, P.A.**  
PROFESSIONAL LAND SURVEYORS

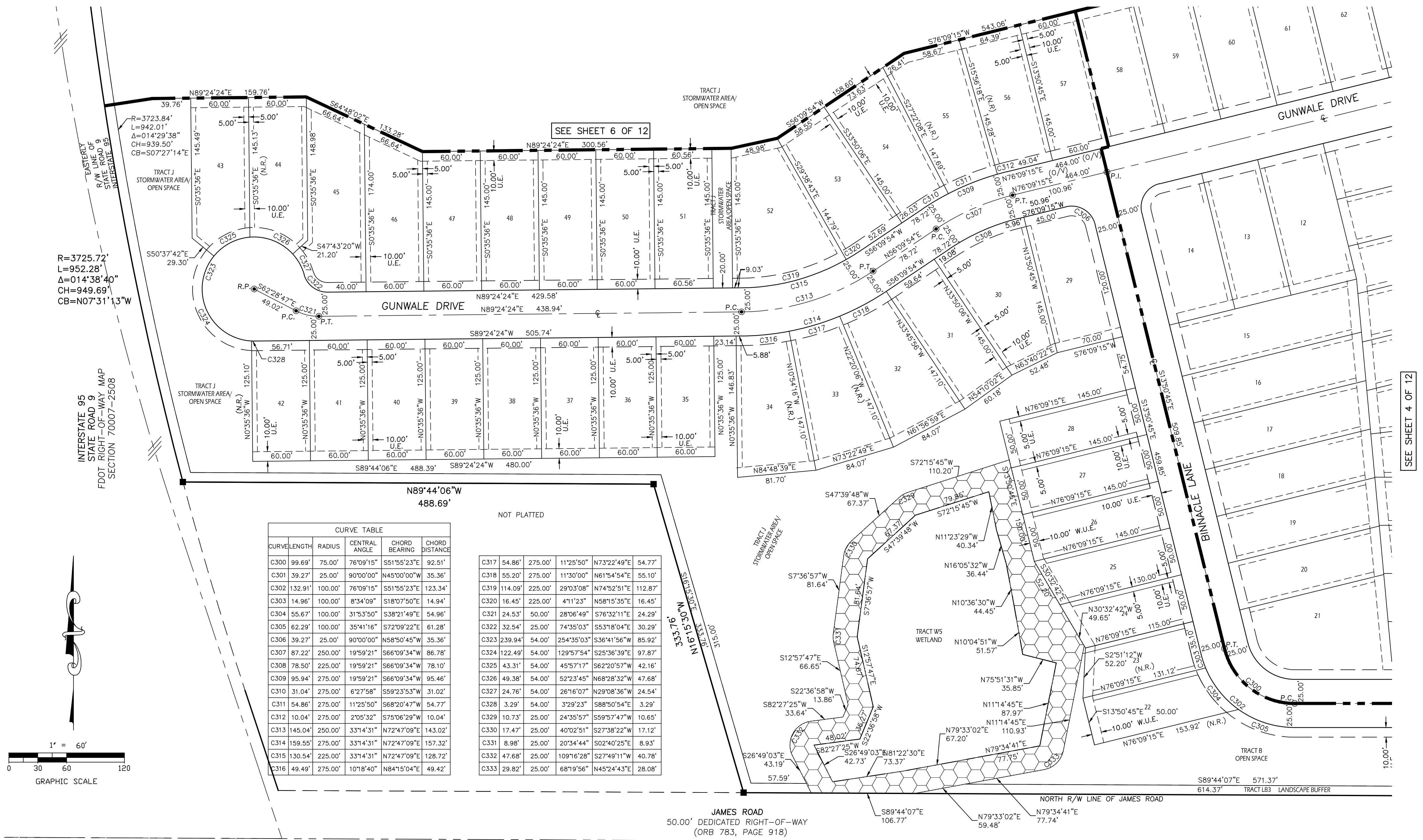
801 International  
Parkway, Ste. 500  
Lake Mary, FL 32746  
407-926-0333

**SHEET INDEX**  
Sheet 1 of 12 - Surveyor's notes, legal description and dedication  
Sheet 2 of 12 - overall boundary geometry and legend  
Sheets 3 through 12 of 12 - boundary, lot & tract geometry



# WINDWARD PRESERVE

LYING IN SECTION 10, TOWNSHIP 24 SOUTH, RANGE 35 EAST, CITY OF COCOA, BREVARD COUNTY, FLORIDA

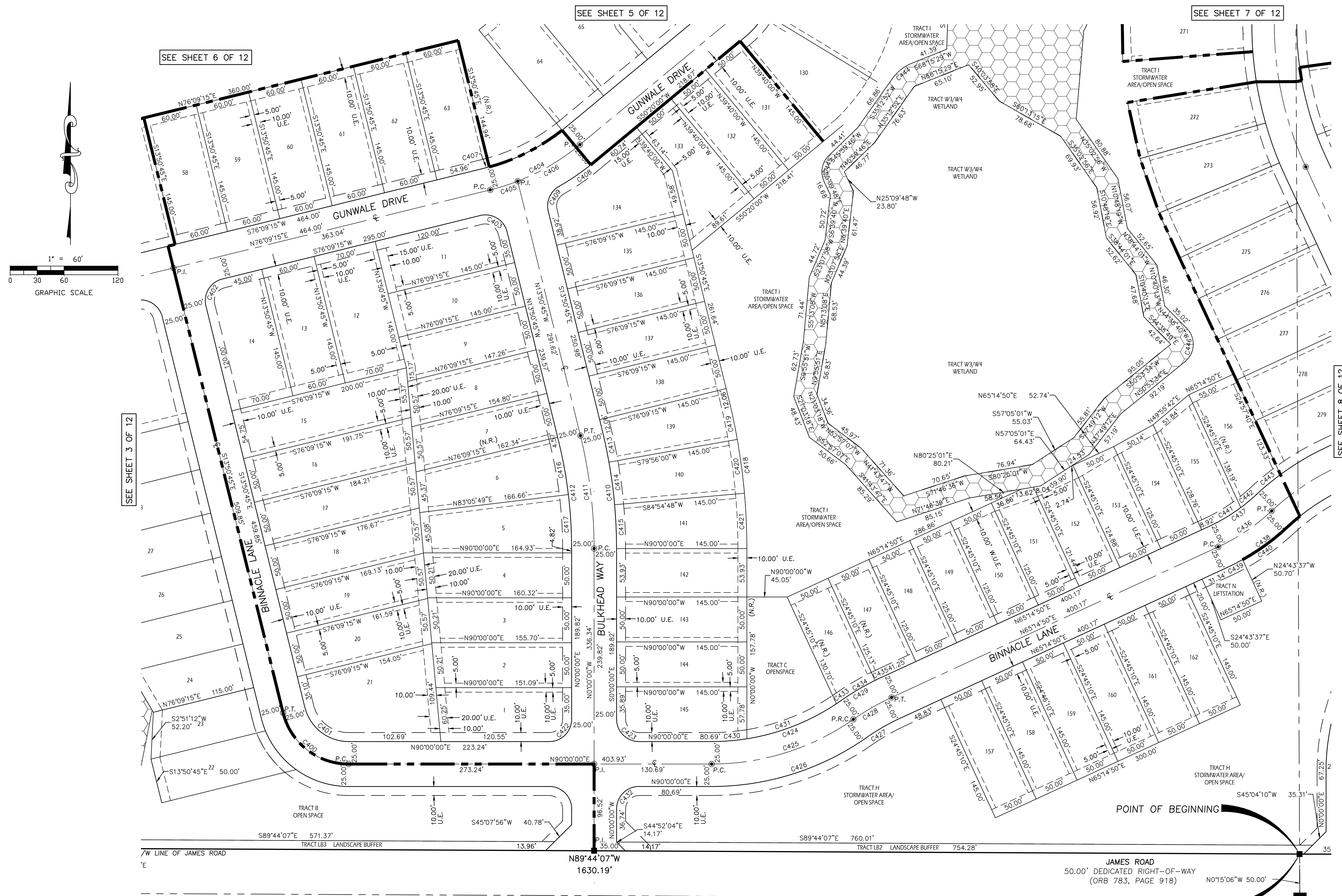




# WINDWARD PRESERVE

LYING IN SECTION 10, TOWNSHIP 24 SOUTH, RANGE 35 EAST, CITY OF COCOA, BREVARD COUNTY, FLORIDA

SHEET 4 OF 12 PLAT BOOK \_\_\_\_\_ PAGE \_\_\_\_\_



SHEET INDEX  
Sheet 1 of 12 - Surveyor's notes, legal description and dedication  
Sheet 2 of 12 - overall boundary geometry and legend  
Sheets 3 through 12 of 12 - boundary, lot & tract geometry



**DALE STOCKSTILL  
& ASSOCIATES, P.A.**  
PROFESSIONAL LAND SURVEYORS

801 International  
Parkway, Ste. 500  
Lake Mary, FL 32746  
407-926-0333

CURVE TABLE				
CURVE	LENGTH	RADIUS	CENTRAL ANGLE	CHORD BEARING
C400	99.69'	75.00'	76°09'15"E	S51°55'23"E
C401	66.46'	50.00'	76°09'15"E	S51°55'23"E
C402	39.27'	25.00'	90°00'00"E	S31°09'15"W
C403	39.27'	25.00'	90°00'00"E	S58°50'45"W
C404	112.66'	250.00'	25°49'15"E	N63°14'38"E
C405	32.05'	250.00'	7°20'40"E	N72°28'55"E
C406	80.62'	250.00'	18°28'35"E	N59°34'18"E
C407	5.04'	225.00'	1°17'01"E	N75°30'44"E
C408	47.84'	275.00'	9°57'59"E	N55°18'59"E
C409	32.35'	25.00'	74°08'44"E	S23°13'37"W
C410	132.91'	550.00'	1°35'04"E	N06°55'23"W
C411	126.87'	525.00'	1°35'04"E	N06°55'23"W

C412	120.83'	500.00'	1°35'04"E	N06°55'23"W
C413	36.28'	550.00'	3°46'45"E	N11°57'23"W
C414	47.81'	550.00'	4°58'48"E	N07°34'36"W
C415	48.83'	550.00'	5°05'12"E	N02°32'36"W
C416	60.59'	500.00'	6°56'34"E	N10°22'28"W
C417	60.24'	500.00'	6°54'11"E	N03°27'06"W
C418	167.95'	695.00'	1°35'04"E	N06°55'23"W
C419	45.84'	695.00'	3°46'45"E	N11°57'23"W
C420	60.41'	695.00'	4°58'48"E	N07°34'36"W
C421	61.70'	695.00'	5°05'12"E	N02°32'36"W
C422	39.27'	25.00'	90°00'00"E	N45°00'00"E
C423	39.27'	25.00'	90°00'00"E	S45°00'00"E

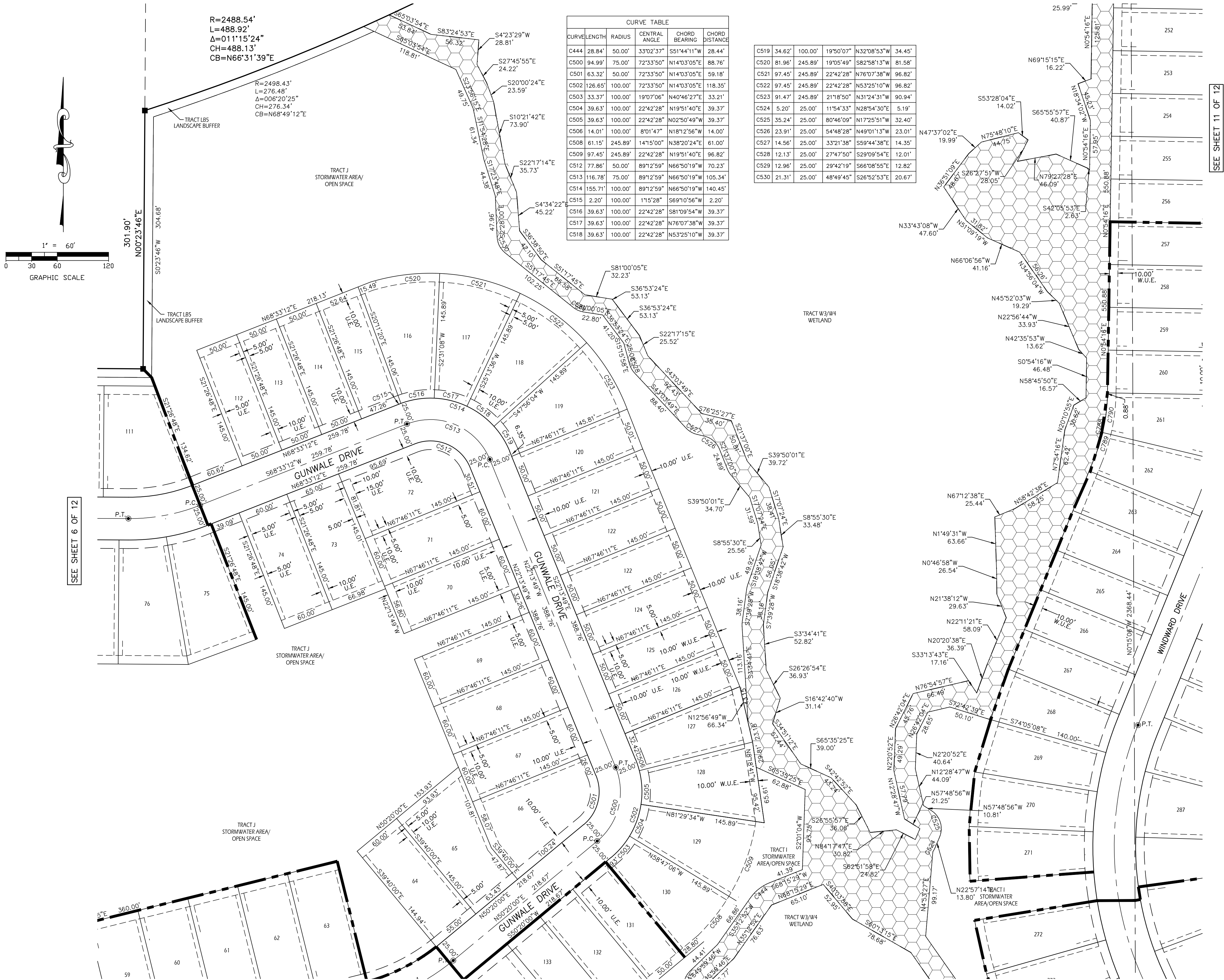
C424	152.68'	250.00'	3°49'32"E	N72°30'14"E
C425	167.95'	275.00'	3°49'32"E	N72°30'14"E
C426	183.22'	300.00'	3°49'32"E	N72°30'14"E
C427	44.68'	250.00'	10°14'22"E	S60°07'39"W
C428	49.15'	275.00'	10°14'22"E	S60°07'39"W
C429	53.61'	300.00'	10°14'22"E	S60°07'39"W
C430	39.47'	250.00'	9°02'48"E	N85°28'36"E
C431	107.71'	250.00'	2°44'10"E	N68°36'37"E
C432	39.27'	25.00'	90°00'00"E	S45°00'00"E
C433	5.50'	250.00'	1°15'34"E	N55°38'15"E
C434	44.87'	300.00'	8°34'07"E	S59°17'32"W
C435	8.75'	300.00'	1°40'14"E	S64°24'43"W

CONCRETE MONUMENT WITH IRON ROD (NO NUMBER)				
C436	71.86'	225.00'	18°18'01"E	N56°05'49"E
C437	63.88'	200.00'	18°18'01"E	N56°05'49"E
C438	79.85'	250.00'	18°18'01"E	N56°05'49"E
C439	18.67'	250.00'	4°16'47"E	N63°06'26"E
C440	61.18'	250.00'	14°01'13"E	N53°57'26"E
C441	41.37'	200.00'	11°51'10"E	N59°19'15"E
C442	22.51'	200.00'	6°28'50"E	N50°10'14"E
C443	34.93'	300.00'	6°40'18"E	S50°16'58"W
C444	28.84'	50.00'	33°02'37"E	S51°44'11"W
C445	31.05'	25.00'	71°09'34"E	S10°24'59"W
C446	41.66'	25.00'	95°29'13"E	N03°08'57"E



# WINDWARD PRESERVE

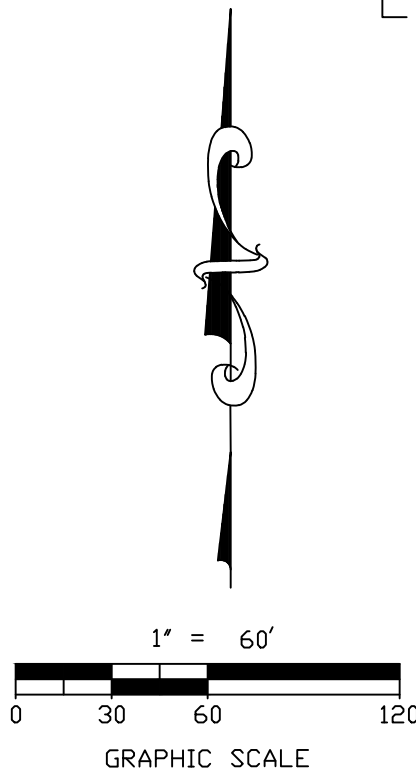
LYING IN SECTION 10, TOWNSHIP 24 SOUTH, RANGE 35 EAST, CITY OF COCOA, BREVARD COUNTY, FLORIDA



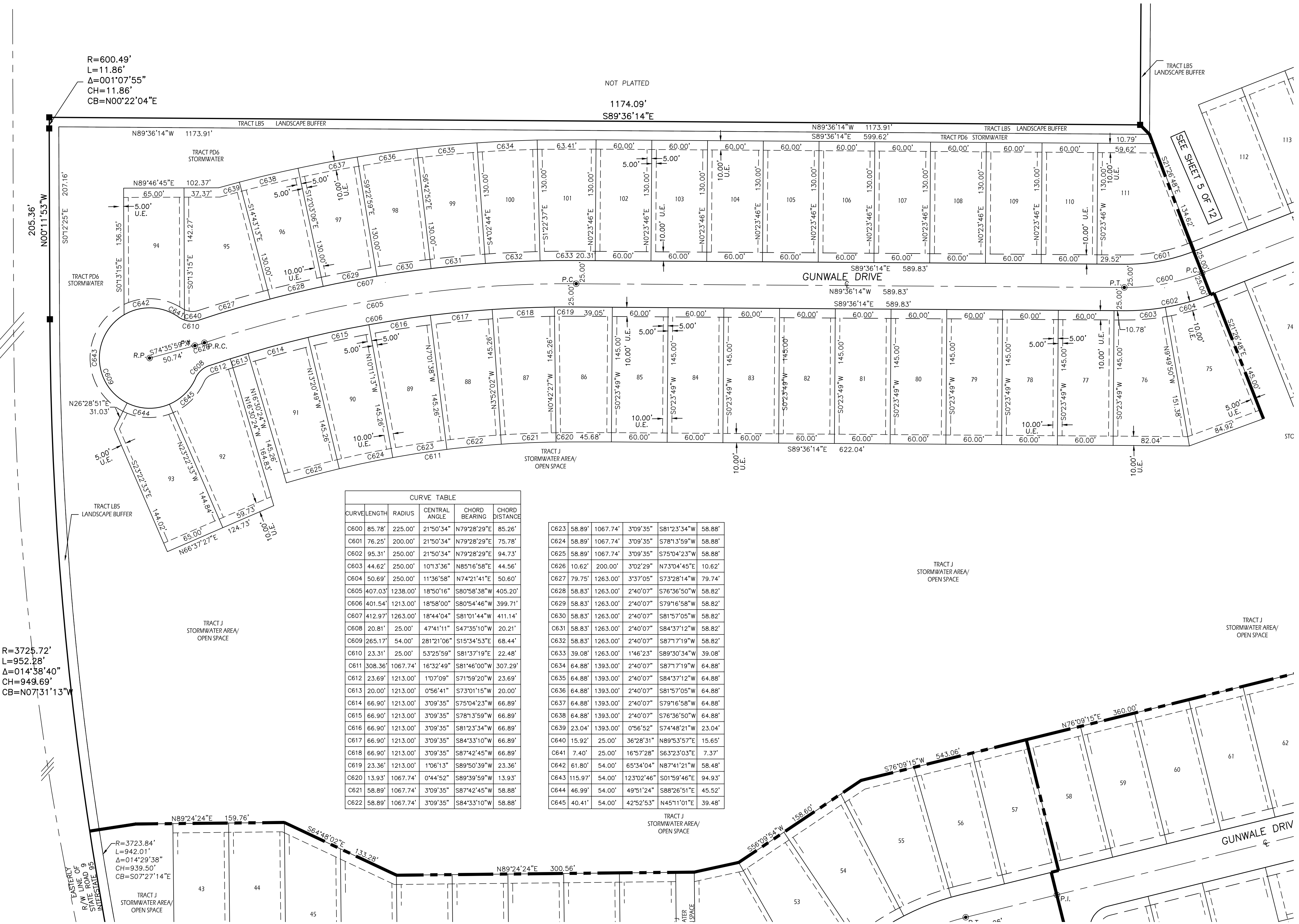


# WINDWARD PRESERVE

LYING IN SECTION 10, TOWNSHIP 24 SOUTH, RANGE 35 EAST, CITY OF COCOA, BREVARD COUNTY, FLORIDA



INTERSTATE 95  
STATE ROAD 9  
FOOT RIGHT-OF-WAY MAP  
SECTION 70007-2508



R=3725.72'  
L=952.28'  
Δ=014°38'40"  
CH=949.69'  
CB=N07°31'13"W

R=600.49'  
L=11.86'  
Δ=001°07'55"  
CH=11.86'  
CB=N00°22'04"E

CURVE TABLE				
CURVE	LENGTH	RADIUS	CENTRAL ANGLE	CHORD BEARING
C600	85.78'	225.00'	21°50'34"	N79°28'29"E
C601	76.25'	200.00'	21°50'34"	N79°28'29"E
C602	95.31'	250.00'	21°50'34"	N79°28'29"E
C603	44.62'	250.00'	101°3'36"	N85°16'58"E
C604	50.69'	250.00'	11°36'58"	N74°21'41"E
C605	407.03'	1238.00'	18°50'16"	S80°58'38"W
C606	401.54'	1213.00'	18°58'00"	S80°54'46"W
C607	412.97'	1263.00'	18°44'04"	S81°01'44"W
C608	20.81'	25.00'	47°41'11"	S47°35'10"W
C609	265.17'	54.00'	281°21'06"	S15°34'53"E
C610	23.31'	25.00'	53°25'59"	S81°37'19"E
C611	308.36'	1067.74'	16°32'49"	S81°46'00"W
C612	23.69'	1213.00'	1°07'09"	S71°59'20"W
C613	20.00'	1213.00'	0°56'41"	S73°01'15"W
C614	66.90'	1213.00'	3°09'35"	S75°04'23"W
C615	66.90'	1213.00'	3°09'35"	S78°13'59"W
C616	66.90'	1213.00'	3°09'35"	S81°23'34"W
C617	66.90'	1213.00'	3°09'35"	S84°33'10"W
C618	66.90'	1213.00'	3°09'35"	S87°42'45"W
C619	23.36'	1213.00'	1°06'13"	S89°50'39"W
C620	13.93'	1067.74'	0°44'52"	S89°39'59"W
C621	58.89'	1067.74'	3°09'35"	S87°42'45"W
C622	58.89'	1067.74'	3°09'35"	S84°33'10"W

C623	58.89'	1067.74'	3°09'35"	S81°23'34"W
C624	58.89'	1067.74'	3°09'35"	S78°13'59"W
C625	58.89'	1067.74'	3°09'35"	S75°04'23"W
C626	10.62'	200.00'	3°02'29"	N73°04'45"E
C627	79.75'	1263.00'	3°37'05"	S73°28'14"W
C628	58.83'	1263.00'	2°40'07"	S76°36'50"W
C629	58.83'	1263.00'	2°40'07"	S79°16'58"W
C630	58.83'	1263.00'	2°40'07"	S81°57'05"W
C631	58.83'	1263.00'	2°40'07"	S84°37'12"W
C632	58.83'	1263.00'	2°40'07"	S87°17'19"W
C633	39.08'	1263.00'	1°46'23"	S89°30'34"W
C634	64.88'	1393.00'	2°40'07"	S87°17'19"W
C635	64.88'	1393.00'	2°40'07"	S84°37'12"W
C636	64.88'	1393.00'	2°40'07"	S81°57'05"W
C637	64.88'	1393.00'	2°40'07"	S79°16'58"W
C638	64.88'	1393.00'	2°40'07"	S76°36'50"W
C639	23.04'	1393.00'	0°56'52"	S74°48'21"W
C640	15.92'	25.00'	36°28'31"	N89°53'57"E
C641	7.40'	25.00'	16°57'28"	S63°23'03"E
C642	61.80'	54.00'	65°34'04"	N87°41'21"W
C643	115.97'	54.00'	123°02'46"	S01°59'46"E
C644	46.99'	54.00'	49°51'24"	S88°26'51"E
C645	40.41'	54.00'	42°52'53"	N45°11'01"E

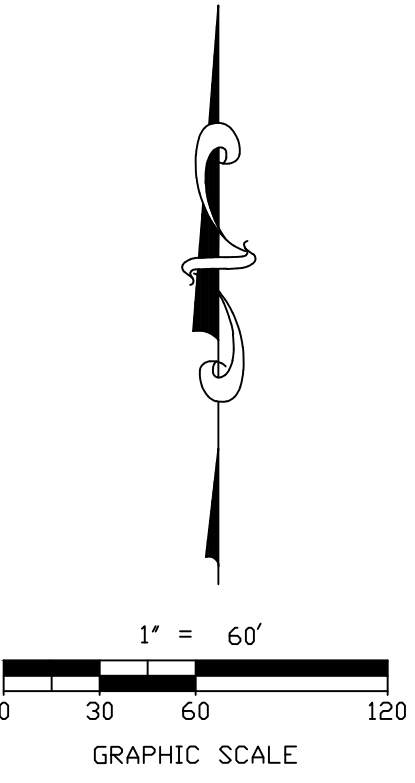
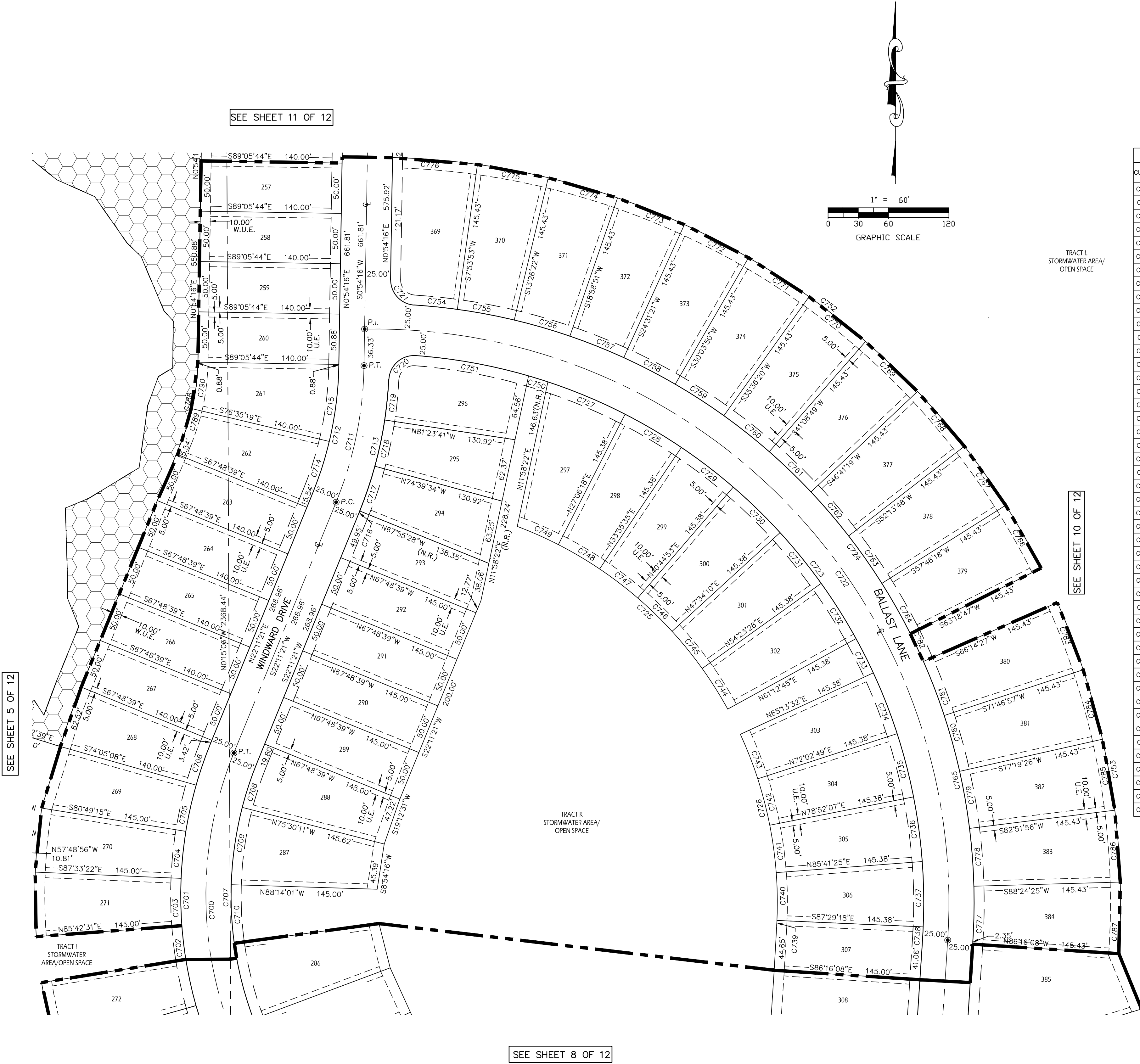
SEE SHEET 3 OF 12

SEE SHEET 4 OF 12



WINDWARD PRESERVE

LYING IN SECTION 10, TOWNSHIP 24 SOUTH, RANGE 35 EAST, CITY OF COCOA, BREVARD COUNTY, FLORIDA



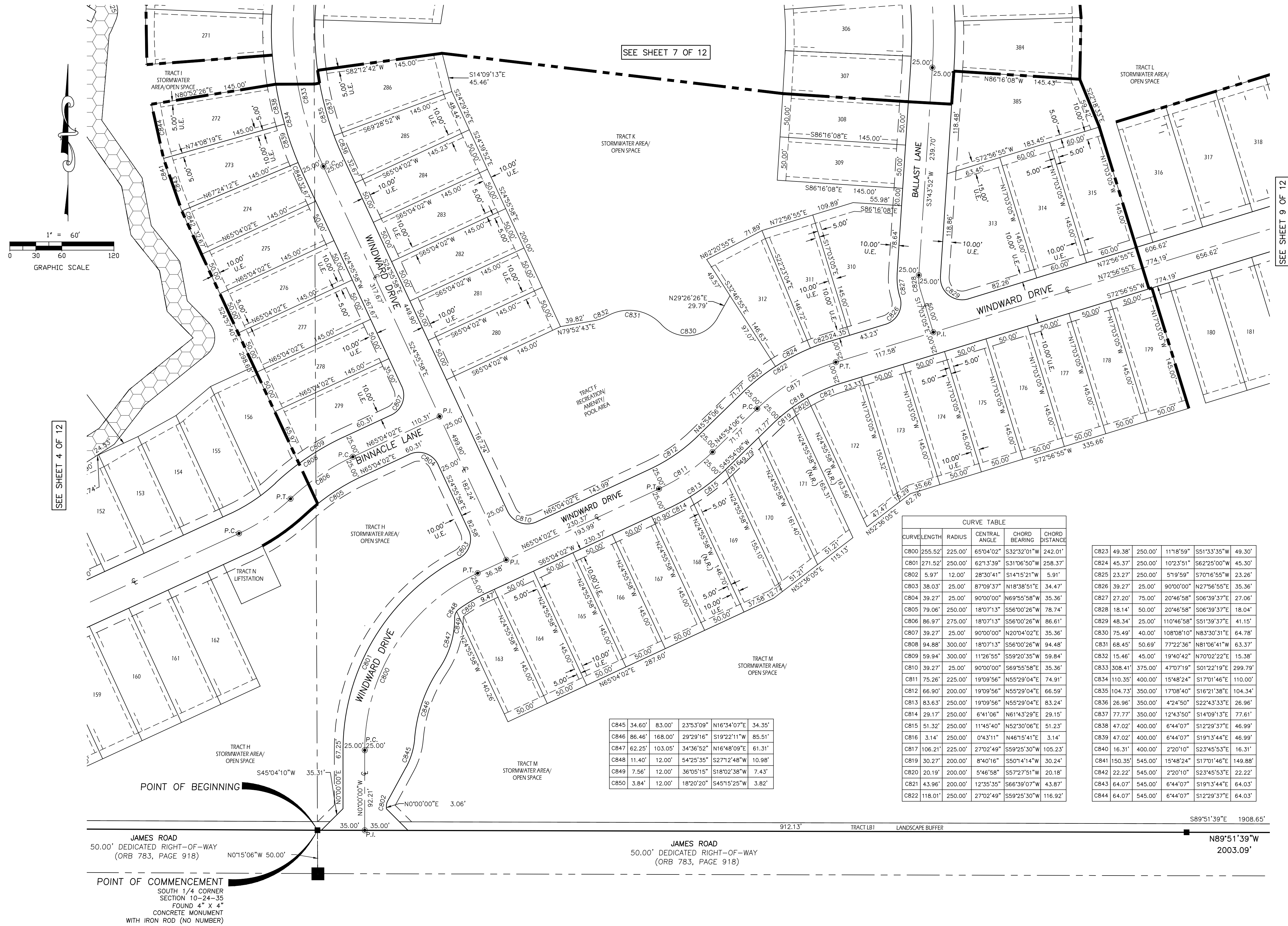
CURVE TABLE				
CURVE	LENGTH	RADIUS	CENTRAL ANGLE	CHORD BEARING
C700	308.41'	375.00'	47°07'19"	S01°22'19"E
C701	328.97'	400.00'	47°07'19"	S01°22'19"E
C702	33.75'	400.00'	4°50'05"	S06°42'31"E
C703	47.02'	400.00'	6°44'07"	S00°55'25"E
C704	47.02'	400.00'	6°44'07"	S05°48'41"W
C705	47.02'	400.00'	6°44'07"	S12°32'48"W
C706	43.81'	400.00'	6°16'29"	S19°03'06"W
C707	287.85'	350.00'	47°07'19"	S01°22'19"E
C708	46.99'	350.00'	7°41'32"	S18°20'35"W
C709	77.58'	350.00'	12°42'01"	S08°07'00"W
C710	58.37'	350.00'	9°33'17"	S03°00'40"E
C711	139.31'	375.00'	21°17'05"	N11°32'48"E
C712	130.02'	350.00'	21°17'05"	N11°32'48"E
C713	135.19'	400.00'	19°21'52"	N12°30'25"E
C714	53.62'	350.00'	8°46'39"	N17°48'01"E
C715	76.40'	350.00'	12°30'25"	N07°09'29"E
C716	0.79'	400.00'	0°06'48"	N22°07'57"E
C717	47.02'	400.00'	6°44'07"	N18°42'29"E
C718	47.02'	400.00'	6°44'07"	N11°58'22"E
C719	40.36'	400.00'	5°46'50"	N05°42'54"E
C720	39.90'	25.00'	91°26'25"	S48°32'42"W
C721	38.03'	25.00'	87°09'35"	S42°40'32"E
C722	942.76'	570.00'	94°45'54"	N43°39'05"W
C723	851.01'	545.00'	89°27'58"	N41°00'07"W
C724	934.48'	595.00'	89°59'12"	N41°54'44"W
C725	282.53'	399.62'	40°30'30"	N49°02'30"W
C726	195.23'	399.62'	27°59'28"	N10°46'44"W
C727	83.15'	545.00'	8°44'29"	N67°15'57"W
C728	64.89'	545.00'	6°49'18"	N59°29'03"W
C729	64.89'	545.00'	6°49'18"	N52°39'46"W
C730	64.89'	545.00'	6°49'18"	N45°50'28"W
C731	64.89'	545.00'	6°49'18"	N39°01'11"W
C732	64.89'	545.00'	6°49'18"	N32°11'53"W
C733	38.17'	545.00'	4°00'47"	N26°46'51"W
C734	64.89'	545.00'	6°49'18"	N21°21'49"W
C735	64.89'	545.00'	6°49'18"	N14°32'32"W
C736	64.89'	545.00'	6°49'18"	N07°43'14"W
C737	64.89'	545.00'	6°49'18"	N00°53'57"W
C738	11.60'	545.00'	1°13'10"	N03°07'17"E
C739	4.92'	399.62'	0°42'18"	N02°51'51"E
C740	47.58'	399.62'	6°49'18"	N00°53'57"W
C741	47.58'	399.62'	6°49'18"	N07°43'14"W
C742	47.58'	399.62'	6°49'18"	N14°32'32"W
C743	47.58'	399.62'	6°49'18"	N21°21'49"W
C744	47.58'	399.62'	6°49'18"	N32°11'53"W
C745	47.58'	399.62'	6°49'18"	N39°01'11"W
C746	47.58'	399.62'	6°49'18"	N45°50'28"W

C747	47.58'	399.62'	6°49'18"	N52°39'46"W
C748	47.58'	399.62'	6°49'18"	N59°29'03"W
C749	44.64'	399.62'	6°24'02"	N66°05'43"W
C750	20.09'	545.00'	2°06'43"	N72°41'33"W
C751	114.02'	545.00'	11°59'12"	N79°44'30"W
C752	800.79'	740.43'	61°57'57"	N57°40'12"W
C753	357.61'	740.43'	27°40'20"	N09°55'22"W
C754	43.13'	595.00'	4°09'12"	N84°10'43"W
C755	57.55'	595.00'	5°32'29"	N79°19'53"W
C756	57.55'	595.00'	5°32'29"	N73°47'23"W
C757	57.55'	595.00'	5°32'29"	N68°14'54"W
C758	57.55'	595.00'	5°32'29"	N62°42'24"W
C759	57.55'	595.00'	5°32'29"	N57°09'55"W
C760	58.07'	595.00'	5°35'29"	N51°38'55"W
C761	57.55'	595.00'	5°32'29"	N46°04'56"W
C762	57.55'	595.00'	5°32'29"	N40°32'27"W
C763	57.55'	595.00'	5°32'29"	N34°59'57"W
C764	57.55'	595.00'	5°32'29"	N29°27'28"W
C765	315.88'	595.00'	30°25'05"	N11°28'40"W
C766	71.61'	740.43'	5°32'29"	N29°27'28"W
C767	71.61'	740.43'	5°32'29"	N34°59'57"W
C768	71.61'	740.43'	5°32'29"	N40°32'27"W
C769	71.61'	740.43'	5°32'29"	N46°04'56"W
C770	71.61'	740.43'	5°32'29"	N51°37'25"W
C771	71.61'	740.43'	5°32'29"	N57°09'55"W
C772	71.61'	740.43'	5°32'29"	N62°42'24"W
C773	71.61'	740.43'	5°32'29"	N68°14'54"W
C774	71.61'	740.43'	5°32'29"	N73°47'23"W
C775	71.61'	740.43'	5°32'29"	N79°19'53"W
C776	84.66'	740.43'	6°33'03"	N85°22'39"W
C777	55.29'	595.00'	5°19'27"	N01°04'09"E
C778	57.55'	595.00'	5°32'29"	N04°21'50"W
C779	57.55'	595.00'	5°32'29"	N09°54'19"W
C780	57.55'	595.00'	5°32'29"	N15°26'48"W
C781	57.55'	595.00'	5°32'29"	N20°59'18"W
C782	30.41'	595.00'	2°55'40"	N25°13'23"W
C783	71.61'	740.43'	5°32'29"	N29°59'18"W
C784	71.61'	740.43'	5°32'29"	N35°26'48"W
C785	71.61'	740.43'	5°32'29"	N39°54'19"W
C786	71.61'	740.43'	5°32'29"	N44°21'50"W
C787	71.16'	740.43'	5°30'23"	N01°09'36"E
C788	78.01'	210.00'	21°17'05"	N11°32'48"E
C789	32.17'	210.00'	8°46'39"	N17°48'01"E
C790	45.84'	210.00'	12°30'25"	N07°09'29"E



## WINDWARD PRESERVE

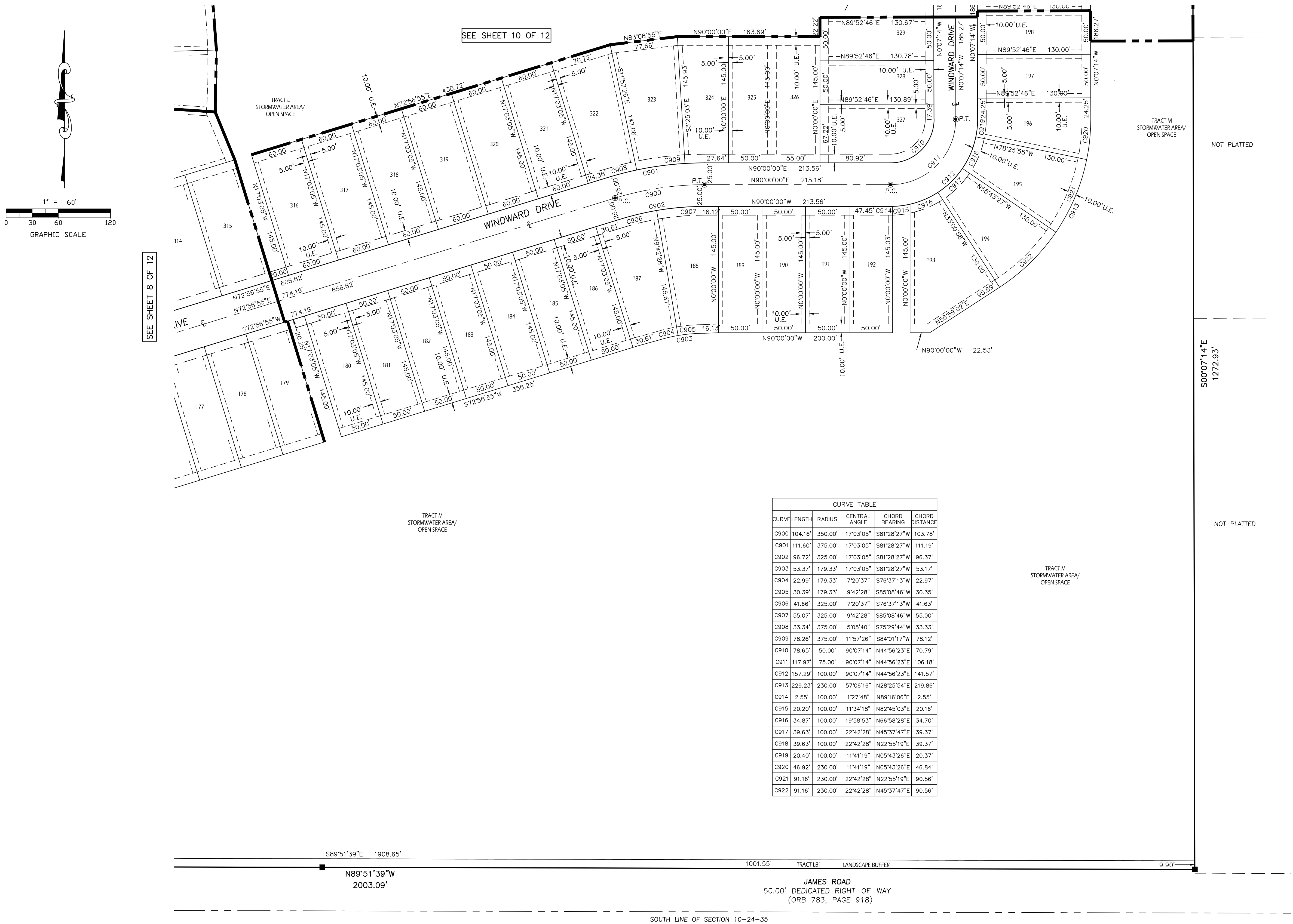
LYING IN SECTION 10, TOWNSHIP 24 SOUTH, RANGE 35 EAST, CITY OF COCOA, BREVARD COUNTY, FLORIDA





WINDWARD PRESERVE

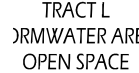
LYING IN SECTION 10, TOWNSHIP 24 SOUTH, RANGE 35 EAST, CITY OF COCOA, BREVARD COUNTY, FLORIDA



CURVE TABLE				
CURVE LENGTH	RADIUS	CENTRAL ANGLE	CHORD BEARING	CHORD DISTANCE
C900 104.16'	350.00'	170°3'05"	S81°28'27"W	103.78'
C901 111.60'	375.00'	170°3'05"	S81°28'27"W	111.19'
C902 96.72'	325.00'	170°3'05"	S81°28'27"W	96.37'
C903 53.37'	179.33'	170°3'05"	S81°28'27"W	53.17'
C904 22.98'	179.33'	7°20'37"	S76°37'13"W	22.97'
C905 30.39'	179.33'	9°42'28"	S85°08'46"W	30.35'
C906 41.66'	325.00'	7°20'37"	S76°37'13"W	41.63'
C907 55.07'	325.00'	9°42'28"	S85°08'46"W	55.00'
C908 33.34'	375.00'	5°05'40"	S75°29'44"W	33.33'
C909 78.26'	375.00'	11°57'26"	S84°01'17"W	78.12'
C910 78.65'	50.00'	90°07'14"	N44°56'23"E	70.79'
C911 117.97'	75.00'	90°07'14"	N44°56'23"E	106.18'
C912 157.29'	100.00'	90°07'14"	N44°56'23"E	141.57'
C913 229.23'	230.00'	57°06'16"	N28°25'54"E	219.86'
C914 2.55'	100.00'	1°27'48"	N89°16'06"E	2.55'
C915 20.20'	100.00'	11°34'18"	N82°45'03"E	20.16'
C916 34.87'	100.00'	19°58'53"	N66°58'28"E	34.70'
C917 39.63'	100.00'	22°42'28"	N45°37'47"E	39.37'
C918 39.63'	100.00'	22°42'28"	N22°55'19"E	39.37'
C919 20.40'	100.00'	11°41'19"	N05°43'26"E	20.37'
C920 46.92'	230.00'	11°41'19"	N05°43'26"E	46.84'
C921 91.16'	230.00'	22°42'28"	N22°55'19"E	90.58'
C922 91.16'	230.00'	22°42'28"	N45°37'47"E	90.56'



SHEET 10 OF 12 | PLAT BOOK \_\_\_\_\_ PAGE \_\_\_\_\_



SEE SHEET 7 OF 12



CURVE TABLE					
CURVE	LENGTH	RADIUS	CENTRAL ANGLE	CHORD BEARING	CHORD DISTANCE
C011	487.61	650.00'	42°58'53"	S46°55'48"E	476.25'
C012	488.81	625.00'	42°58'37"	S46°55'40"E	457.89'
C013	506.31	675.00'	42°58'33"	S46°55'40"E	494.52'
C014	8.47	625.00'	0°46'35"	S68°01'41"E	8.47'
C016	109.93	625.00'	10°04'40"	S62°36'30"E	109.79'
C017	61.83	625.00'	5°40'04"	S54°43'42"E	61.80'
C018	61.82	625.00'	5°40'04"	S49°03'38"E	61.80'
C019	61.82	625.00'	5°40'04"	S43°23'35"E	61.80'
C020	61.82	625.00'	5°40'03"	S37°43'31"E	61.80'
C021	61.82	625.00'	5°40'04"	S32°03'27"E	61.80'
C022	37.88	625.00'	3°28'23"	S27°29'14"E	37.88'
C023	8.72	625.00'	0°44'24"	S25°48'33"E	8.72'
C024	57.83	675.00'	4°54'32"	S28°38'01"E	57.81'
C025	57.83	675.00'	4°54'32"	S33°32'33"E	57.81'
C026	57.83	675.00'	4°54'32"	S38°27'05"E	57.81'
C027	57.83	675.00'	4°54'32"	S43°21'36"E	57.81'
C028	57.83	675.00'	4°54'32"	S48°16'08"E	57.81'
C029	57.83	675.00'	4°54'32"	S53°10'40"E	57.81'
C030	57.83	675.00'	4°54'32"	S58°05'12"E	57.81'
C031	59.12	675.00'	5°01'06"	S63°03'00"E	59.10'
C032	20.41	675.00'	1°42'03"	S66°24'34"E	20.24'
C033	70.29	820.39'	4°54'32"	S53°10'40"E	70.27'
C034	70.29	820.39'	4°54'32"	S48°16'08"E	70.27'
C035	70.29	820.39'	4°54'32"	S43°21'36"E	70.27'
C037	70.29	820.39'	4°54'32"	S38°27'05"E	70.27'
C038	70.29	820.39'	4°54'32"	S33°32'33"E	70.27'
C039	55.57	820.39'	3°52'51"	S29°08'51"E	55.56'
C040	160.92	350.00'	26°20'37"	S12°16'03"E	159.51'
C041	149.43	325.00'	26°20'37"	S12°16'03"E	148.12'
C042	172.42	375.00'	26°20'37"	S12°16'03"E	170.03'
C043	75.20	325.00'	13°15'28"	S18°48'37"E	75.00'
C044	74.23	325.00'	13°05'09"	S05°38'19"E	74.07'
C045	188.36	520.62'	20°34'48"	S12°16'03"E	187.34'
C046	44.05	520.62'	4°50'51"	S04°19'34"E	44.03'
C047	77.98	520.62'	8°34'56"	S11°02'28"E	77.91'
C048	66.33	520.62'	7°18'00"	S18°58'56"E	66.29'
C049	50.10	375.00'	7°39'16"	S02°55'22"E	50.06'
C050	56.17	375.00'	8°34'56"	S11°02'28"E	56.12'
C051	56.17	375.00'	8°34'56"	S19°37'24"E	56.12'
C052	8.12	375.00'	17°42'29"	S24°49'07"E	8.12'
C053	3.40	625.00'	0°18'41"	S29°53'42"E	3.40'
C054	51.96	25.00'	11°09'50"	S07°09'29"E	43.10'
C055	49.54	25.00'	11°33'23"	S11°51'30"E	41.82'
C056	10.80	25.00'	24°44'43"	S02°55'25"E	10.78'
C057	208.95	485.67'	24°39'00"	S41°01'07"E	207.34'
C058	48.69	25.00'	11°33'05"	S83°33'11"E	47.35'
C059	157.25	558.99'	16°07'03"	S32°57'04"E	156.73'
C060	48.69	25.00'	11°33'05"	S83°33'11"E	47.35'
C061	4.91	485.67'	0°31'48"	S28°57'31"E	4.49'
C062	48.04	485.67'	5°40'04"	S32°03'27"E	48.02'
C063	48.04	485.67'	5°40'03"	S37°43'31"E	48.02'
C064	48.04	485.67'	5°40'04"	S43°23'35"E	48.02'
C065	48.04	485.67'	5°40'04"	S49°03'38"E	48.02'
C066	48.04	485.67'	5°40'04"	S54°43'42"E	48.02'
C067	12.28	485.67'	1°26'57"	S52°37'09"E	12.28'
C068	35.76	485.67'	4°13'07"	S55°27'11"E	35.75'
C069	59.60	50.00'	68°17'44"	N34°16'06"E	56.13'
C070	89.40	75.00'	68°17'44"	N34°16'06"E	84.20'
C071	119.20	100.00'	68°17'44"	N34°16'06"E	112.27'
C072	277.19	230.00'	69°03'06"	N34°38'47"E	260.72'
C073	13.62	675.00'	109°23"	S67°50'17"E	13.62'
C074	10.27	100.00'	5°53'11"	N65°28'23"E	10.27'
C075	39.63	100.00'	22°42'28"	N51°10'34"E	39.37'
C076	39.63	100.00'	22°42'28"	N28°26'06"E	39.37'
C077	29.66	100.00'	16°59'38"	N08°37'03"E	29.55'
C078	26.66	230.00'	6°38'33"	N65°51'04"E	26.65'
C079	16.51	230.00'	22°42'28"	N51°10'34"E	16.56'
C080	91.15	230.00'	22°42'28"	N28°26'06"E	90.96'
C081	68.22	230.00'	16°59'38"	N08°37'03"E	67.97'

**SHEET INDEX**  
 Sheet 1 of 12 – Surveyor's notes, legal description and dedication  
 Sheet 2 of 12 – overall boundary geometry and legend  
 Sheets 3 through 12 of 12 – boundary, lot & tract geometry

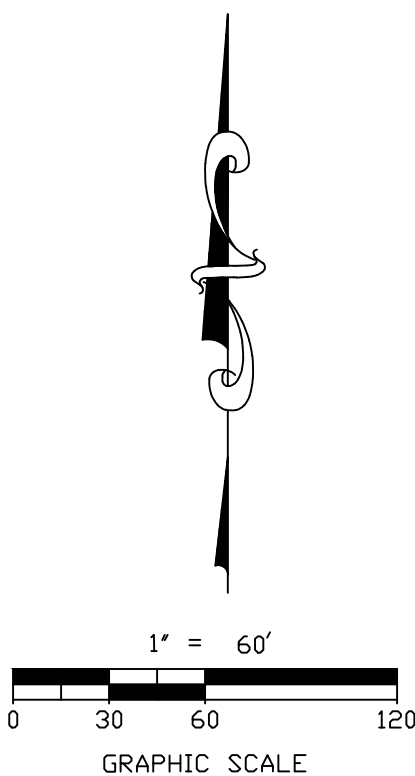
	<b>DALE STOCKSTILL</b> <b>&amp; ASSOCIATES, P.A.</b> PROFESSIONAL LAND SURVEYORS	801 International Parkway, Ste. 500 Lake Mary, FL 32746 407-926-0333
	www.dalestockstill.com	



WINDWARD PRESERVE

LYING IN SECTION 10, TOWNSHIP 24 SOUTH, RANGE 35 EAST, CITY OF COCOA, BREVARD COUNTY, FLORIDA

SHEET 11 OF 12 PLAT BOOK \_\_\_\_\_ PAGE \_\_\_\_\_



CURVE TABLE				
CURVE LENGTH	RADIUS	CENTRAL ANGLE	CHORD BEARING	CHORD DISTANCE
C1100	78.54'	50.00'	90°00'00"	S45°54'16"W 70.71'
C1101	117.81'	75.00'	90°00'00"	S45°54'16"W 106.07'
C1102	157.08'	100.00'	90°00'00"	S45°54'16"W 141.42'
C1103	293.18'	246.79'	68°04'09"	S41°50'04"W 276.24'
C1104	11.94'	100.00'	6°50'26"	S04°19'29"W 11.93'
C1105	39.63'	100.00'	22°42'28"	S19°05'56"W 39.37'
C1106	39.63'	100.00'	22°42'28"	S41°48'24"W 39.37'
C1107	39.63'	100.00'	22°42'28"	S64°30'53"W 39.37'
C1108	26.24'	100.00'	15°02'09"	S83°23'11"W 26.17'
C1109	97.57'	246.79'	22°39'09"	S19°07'36"W 96.93'
C1110	97.81'	246.79'	22°42'28"	S41°48'24"W 97.17'
C1111	97.81'	246.79'	22°42'28"	S64°30'53"W 97.17'
C1112	78.54'	50.00'	90°00'00"	N44°05'44"W 70.71'

C1113	117.81'	75.00'	90°00'00"	N44°05'44"W 106.07'
C1114	157.08'	100.00'	90°00'00"	N44°05'44"W 141.42'
C1115	303.60'	248.81'	69°54'42"	N44°05'44"W 285.11'
C1116	39.63'	100.00'	22°42'28"	N57°09'33"W 39.37'
C1117	39.63'	100.00'	22°42'28"	N34°27'05"W 39.37'
C1118	39.63'	100.00'	22°42'28"	N11°44'37"W 39.37'
C1119	60.61'	248.81'	13°57'28"	N16°07'07"W 60.46'
C1120	98.61'	248.81'	22°42'28"	N34°27'05"W 97.97'
C1121	98.61'	248.81'	22°42'28"	N57°09'33"W 97.97'
C1122	2.26'	100.00'	11°7'39"	N00°15'27"E 2.26'
C1123	35.92'	100.00'	20°34'56"	N78°48'16"W 35.73'
C1124	45.76'	248.81'	10°32'18"	N73°46'56"W 45.70'



DALE STOCKSTILL  
& ASSOCIATES, P.A.  
PROFESSIONAL LAND SURVEYORS

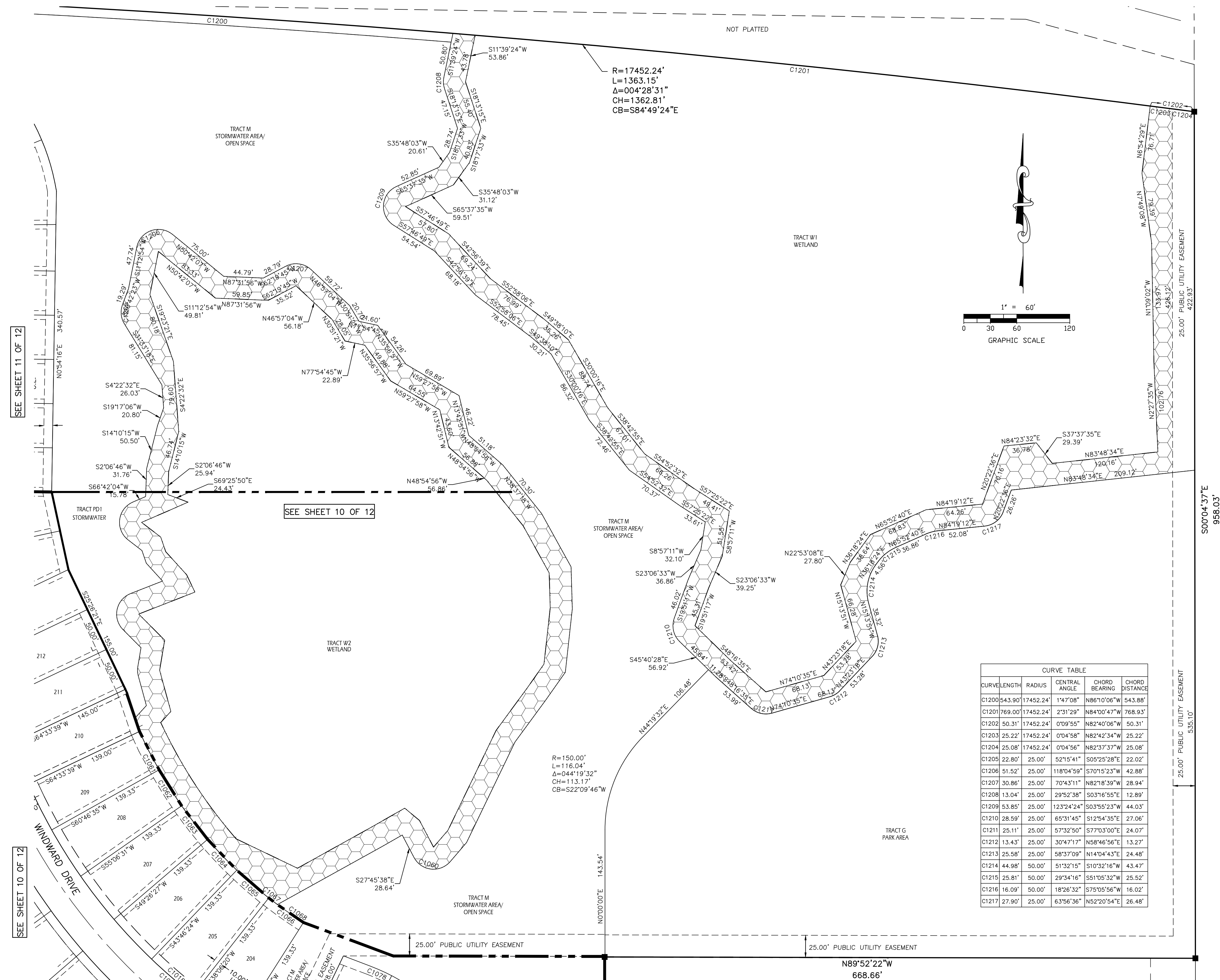
801 International  
Parkway, Ste. 500  
Lake Mary, FL 32746  
407-926-0333

SHEET INDEX  
Sheet 1 of 12 - Surveyor's notes, legal description and dedication  
Sheet 2 of 12 - overall boundary geometry and legend  
Sheets 3 through 12 of 12 - boundary, lot & tract geometry



## WINDWARD PRESERVE

LYING IN SECTION 10, TOWNSHIP 24 SOUTH, RANGE 35 EAST, CITY OF COCOA, BREVARD COUNTY, FLORIDA



CURVE TABLE					
CURVE	LENGTH	RADIUS	CENTRAL ANGLE	GROUND BEARING	CHORD BEARING
C1200	543.90'	17452.24'	1°47'08"	N06°10'06"W	54°01'06"E
C1201	769.00'	17452.24'	2°31'29"	N84°00'47"W	768.00'
C1202	50.31'	17452.24'	0°09'55"	N82°40'06"W	50.31'
C1203	25.22'	17452.24'	0°04'58"	N82°44'34"W	25.22'
C1204	25.85'	17452.24'	0°04'56"	N82°37'37"W	25.85'
C1205	22.80'	25.00'	52°51'41"	S05°25'29"S	22.80'
C1206	51.52'	25.00'	118°04'59"	S70°15'23"W	42.80'
C1207	30.86'	25.00'	70°43'11"	N82°18'39"W	28.80'
C1208	13.04'	25.00'	29°52'38"	S03°16'55"W	12.80'
C1209	58.85'	25.00'	123°24'24"	S03°55'23"W	44.00'
C1210	28.59'	25.00'	65°31'45"	S12°54'35"E	27.00'
C1211	25.31'	25.00'	57°32'50"	S77°00'06"E	25.31'
C1212	13.43'	25.00'	30°47'17"	N58°36'30"E	13.43'
C1213	25.58'	25.00'	58°37'09"	N14°04'43"E	24.40'
C1214	44.98'	50.00'	51°32'15"	S10°32'16"E	43.50'
C1215	28.81'	50.00'	29°34'16"	S51°05'32"W	25.80'
C1216	16.90'	50.00'	18°26'32"	S75°05'56"W	16.00'
C1217	27.09'	25.00'	63°56'36"	N52°20'54"E	26.00'

SHEET INDEX

SHEET INDEX  
Sheet 1 of 12 – Surveyor's notes, legal description and dedication  
Sheet 2 of 12 – overall boundary geometry and legend  
Sheets 3 through 12 of 12 – boundary, lot & tract geometry



**DALE STOCKSTILL**  
 & ASSOCIATES, P.A.  
 PROFESSIONAL LAND SURVEYORS

801 International  
Parkway, Ste. 500  
Lake Mary, FL 32746  
407-926-0333