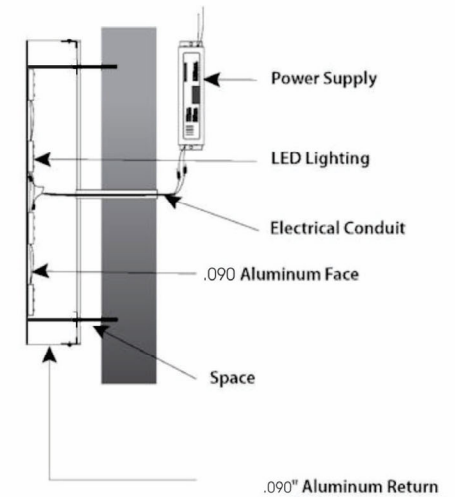


**FRONT VIEW**



4 Corners SR 520 / US Hwy 1

THIS DESIGN IS THE PROPERTY OF BERRY SIGNS, INC. AND MAY NOT BE REPRODUCED, ALTERED OR DISTRIBUTED WITHOUT THE EXPRESSED WRITTEN PERMISSION OF BERRY SIGNS, INC.



ST-LIC #ET1100613

CUSTOMER City of Cocoa

DESIGN BY DBerry

DATE MET LISTED # As Required

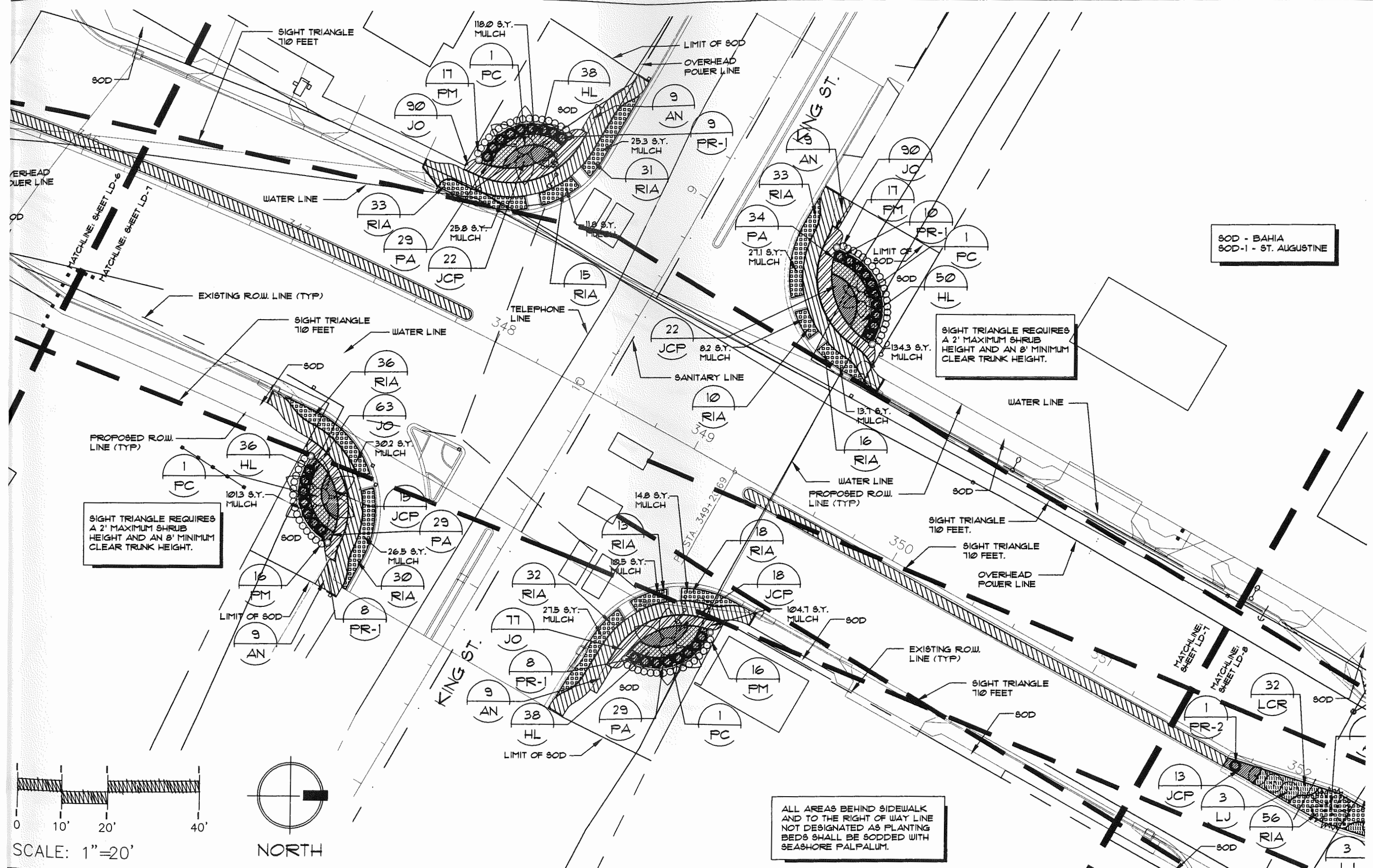
DESIGN# Bs4576

SCALE N-T-S

REVISION-03

1740 S. HUNTINGTON LANE ROCKLEDGE, FL 32955 (321) 631-6150 FAX (321)-631-8435 OR VISIT US @ [WWW.BERRYSIGNS.COM](http://WWW.BERRYSIGNS.COM)

BERRY SIGNS, INC. IS NOT RESPONSIBLE FOR PRIMARY ELECTRICAL CONNECTION OF SIGN

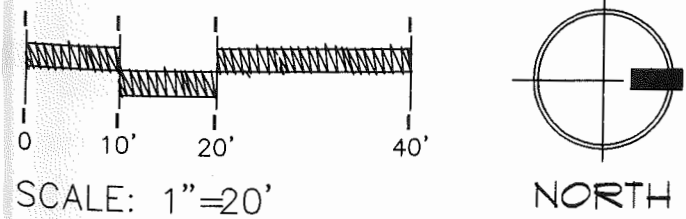


SOD - BAHIA  
SOD-1 - ST. AUGUSTINE

SIGHT TRIANGLE REQUIRES  
A 2' MAXIMUM SHRUB  
HEIGHT AND AN 8' MINIMUM  
CLEAR TRUNK HEIGHT.

SIGHT TRIANGLE REQUIRES  
A 2' MAXIMUM SHRUB  
HEIGHT AND AN 8' MINIMUM  
CLEAR TRUNK HEIGHT.

ALL AREAS BEHIND SIDEWALK  
AND TO THE RIGHT OF WAY LINE  
NOT DESIGNATED AS PLANTING  
BEDS SHALL BE SODDED WITH  
SEASHORE PALPALUM.



REVISIONS					
BY	DESCRIPTION	DATE	BY	DESCRIPTION	

**MILLER LEGG**  
ASSOCIATES, INC.

ENGINEERS • SURVEYORS & MAPPERS  
PLANNERS • LANDSCAPE ARCHITECTS  
GIS • ENVIRONMENTAL PROFESSIONALS

631 S. Orlando Avenue, Suite 200  
Winter Park, Florida 32789-7122  
(407)629-6880 Fax: (407)629-7883  
Cert. of Authorization L.B. 6580  
www.millerlegg.com

STATE OF FLORIDA DEPARTMENT OF TRANSPORTATION		
ROAD NO.	COUNTY	FINANCIAL PROJECT ID
S.R. 5	BREVARD	237592-1-52-02

S.R. 5 (U.S. 1)  
**LANDSCAPE PLAN**

SHEET NO.
LD-7