



Stormwater Program



Stormwater Division Responsibilities



77 acres of pond



2,328 stormwater infrastructures such as inlets, culverts, head walls and weirs



565 manholes



5 miles of ditches



65 miles of stormwater pipes



2,000 miles per year of streets swept



Review of Stormwater Assessment

- In Fiscal Year 2019, the enterprise fund for stormwater management generated approximately \$1.5M to cover existing operation/maintenance and minor capital improvements and has not been materially changed since the 90's.
 - \$1.5M Revenue - \$1.2M O&M = Approximately \$300K to fund capital projects.
- Additional revenue was needed to reduce flooding and comply with mandated water quality regulations.
- A financial model was used to review scenarios and develop a sustainable financial plan for the stormwater utility moving forward.



10 Year Capital Plan

- In order to plan and budget for the City of Cocoa's future stormwater needs, a 10 year Capital Improvement Plan was created to ensure a judicious investment of finite resources.



\$6,403,760 Flood Mitigation Projects



\$11,470,882 Water Quality Projects



\$1,013,984 Equipment Replacement



\$1,511,500 Stormwater Infrastructure Improvement/Repair and Maintenance



Implementation Plan

January

Newspaper advertisement for Public Hearing on Resolution of Intent

February

- Newspaper advertisement for Public Hearing on Resolution of Intent
- Public Hearing on Resolution of Intent

May

- Public Stormwater Utility Workshop at City Council Meeting
- Agreement approved with Tax Collector and Property Appraiser

June

- Newspaper advertisement for First Reading and Final Reading of Assessment Ordinance
- First Reading of Assessment Ordinance

July

Final reading of Assessment Ordinance

August

- Notice Letters
- 1st Public Hearing for Initial Assessment Resolution

September

- 2nd Public Hearing
- Adopt Assessment Resolution
- Certify Assessment Roll
- Last Utility Billing

October

Fiscal Year Begins

November

Tax Collector sends out bill for Stormwater Assessment due Jan 1st



Stormwater Tiered Rate Structure

Fiscal Year 2020 (October 1, 2019 – September 30, 2020)
Assessment Rates for Single Family Parcels (residential)*a

Tier 1: 400 – 2,300 sq.ft.
of impervious area

\$71.96

Tier 2: 2,400 – 4,400
sq.ft. of impervious area

\$110.71

Tier 3: Greater than 4,400
sq.ft. of impervious area

\$192.64

Fiscal Year 2020 (October 1, 2019 – September 30, 2020)
Assessment Rates for Single Family Parcels (residential)*

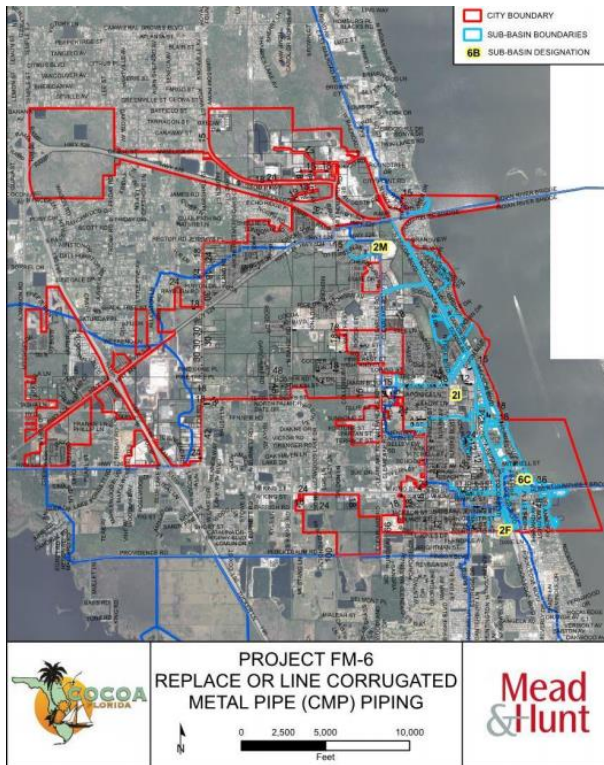
\$110.71 per ERU (3,100 sq.ft. equivalent residential unit)

*Equivalent Residential Unit reflects the median impervious area on a tier two single family residential parcel.

The anticipated Fiscal Year revenue generation is approximately
\$1.7M.



City-wide Flood Mitigation Projects

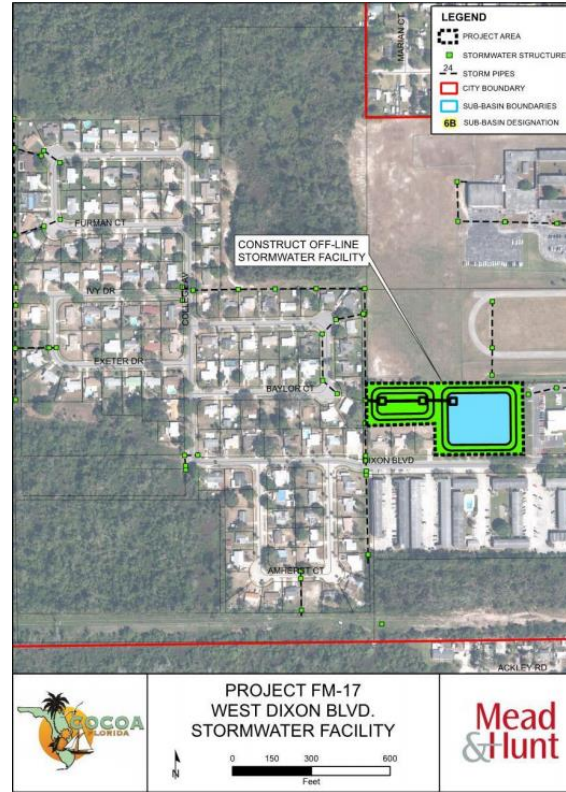
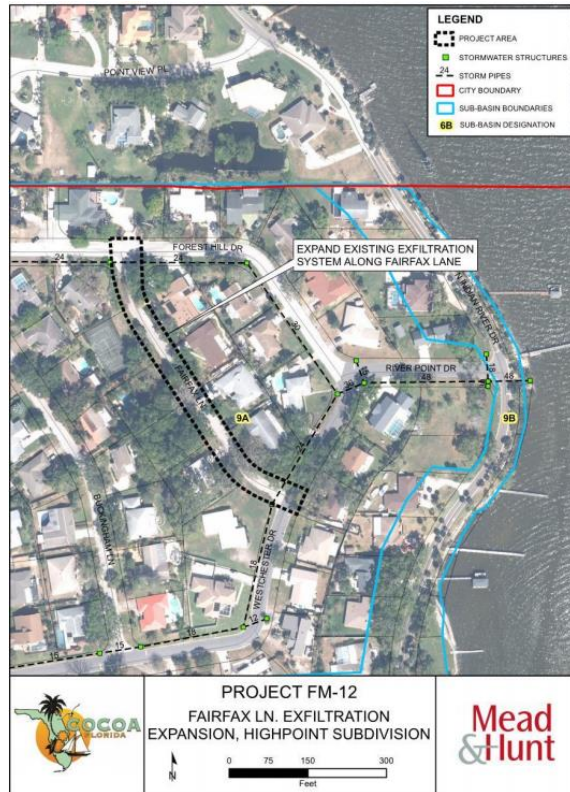


City-wide Projects:

- Annually Replace or Line Corrugated Metal Pipe (CMP) Piping (\$200,000)
- Annual Curb & Gutter Repair & Maintenance Program (\$50,000)
- Bracco Pond Discharge and Outfall Structure
- Comprehensive System Model
- Bracco Pond 72" Outfall Rehabilitation/Replacement



District 4 Flood Mitigation Projects



- Fairfax Lane Exfiltration Expansion, Highpoint Subdivision
- West Dixon Blvd. Stormwater Facility
- Circle Drive Dry Retention Pond, Carleton Terrace & Broadview Manor Swales



LEGEND

- PROJECT AREA
- STORMWATER STRUCTURES
- STORM PIPES
- CITY BOUNDARY
- SUB-BASIN BOUNDARIES
- SUB-BASIN DESIGNATION

PROJECT FM-12
FAIRFAX LN. EXFILTRATION
EXPANSION, HIGHPOINT SUBDIVISION

0 75 150 300
 Feet

Cocoa
 FLORIDA

Mead & Hunt



-

Questions?

