



Every Child Deserves a Home

Why are we here today?

- We want to relocate our programs for families with children to the heart of the City of Cocoa.
- We humbly ask the City of Cocoa to support our efforts by **donating a centralized location** for the delivery of exceptional and collaborative services to enrich the quality of life of Cocoa and Brevard families experiencing housing instability.

The poverty line for a family of four is \$24,300.

1 in 6 U.S. children live in poverty

11 million households pay more than
50% of their income for housing.

Families with children comprise 35%
of the homeless population nationwide.

*2.5 million children will experience
homelessness this year in America.*

Why is the need so great?

- A renter must earn \$19.86/hour to afford a 2-bedroom rental in the Brevard.
- 11 million renter households now pay more than 50% of their income for housing—an increase of 3.7 million households since 2001.
- For every 10 extremely low-income households, there are only 3 affordable rentals available nationwide.

Since 1960, renters' incomes have only gone up by 5%. Rents have gone up by 61%.



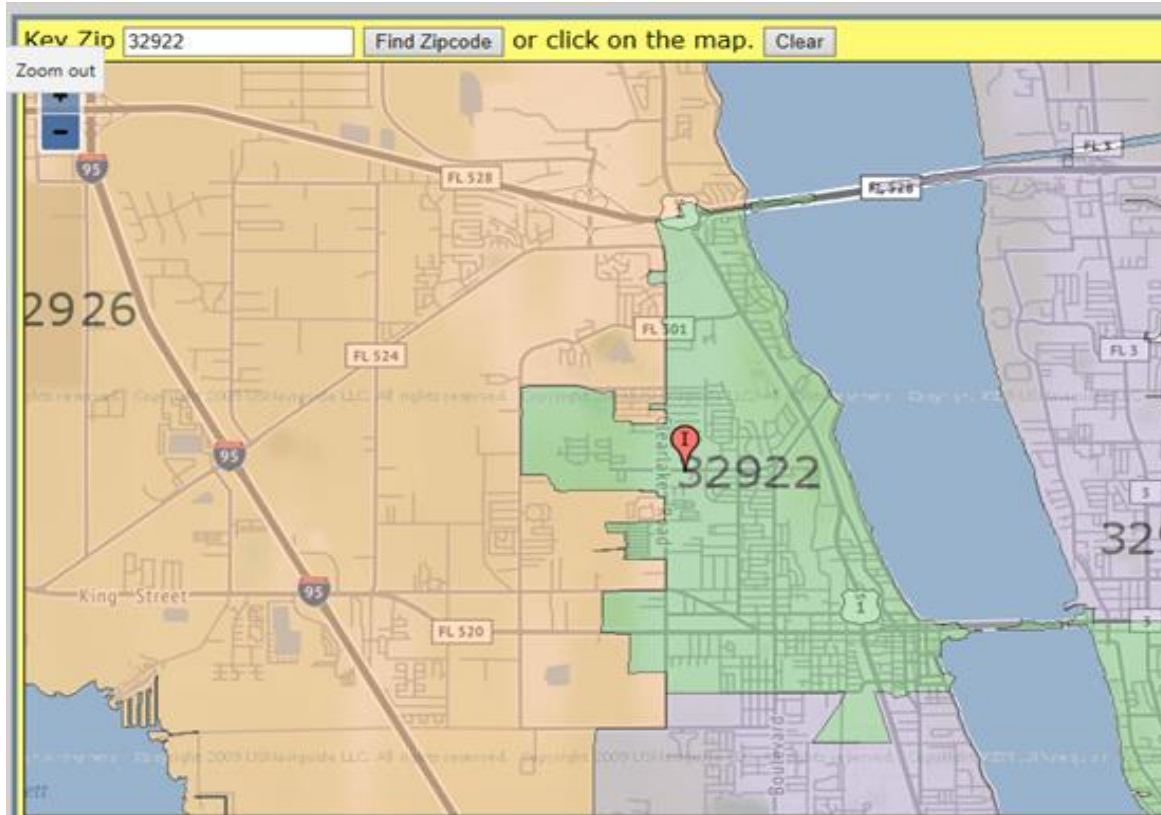
Statistics from ALICE

ALICE is an acronym for **ALICE** — **A**sset **L**imited, **I**ncome **C**onstrained, **E**mployed — households that earn more than the Federal Poverty Level, but less than the basic cost of living for the county (the ALICE Threshold).

ALICE workers make our quality of life possible, yet do not earn enough to support their own families. They are teachers, first responders, healthcare workers and early educators.

- Cocoa has the **highest percentage of families below ALICE in Brevard County at 73%** (the Brevard County average is 42%)
- In Cocoa, this is 4,325 families in 2018 before COVID-19
- After COVID-19, we estimate this number increasing 50% to over 8,000 families

Cocoa ALICE Area



The Cocoa ALICE score of 73% is for zip code 32922 shown to the left

- This area includes the Cocoa Fire Station east of the water tower
- And the entire area of Diamond Square

Assisting these families would best be done within the area of need, with fewest barriers

Cost of homelessness: Brevard 2016

HEALTH CARE	\$22,112,390
1 ST RESPONDERS	\$410,812
LEGAL (PROSECUTION)	\$901,452
INCARCERATION (JAIL)	\$3,549,792
EDUCATION	\$658,000
TOTAL	\$27,632,446

Impact of Homelessness on Children☆



3

times more likely to be placed in special education programs



8-9

times more likely to repeat grades



42%

Dropped out of school at least once



47%

suffer from anxiety, depression, or withdrawal

7

times more likely to attempt suicide



Family Promise of Brevard

Our Mission

To end family homelessness in Brevard County by collaborating with our community to provide families the support and resources they need to achieve long-term housing stability.

Our Vision

To ensure every family has a path to safe, affordable housing, and the resources to achieve self-sufficiency and lasting independence.

Our Promise

- We will be good stewards of the resources we receive.
- We will empower families by showing them the dignity and respect they deserve.
- We will practice transparency to create strong community relationships.
- We will hold ourselves accountable to our families and community.

Family Homelessness:

The answer is not just a shelter.



Financial
Literacy



Health &
Wellness



Transitional
Housing



Family
Mentoring



Childcare
Services



Rental
Assistance



Homelessness
Prevention



Micro
entrepreneurship

Who is Family Promise of Brevard?

Changing the future for children

PREVENTION



SHELTER DIVERSION

Keeping families out of shelter is good public policy and good fiscal policy.



RENTAL ASSISTANCE

With HUMI, we have helped 1,000 families, including 2,500 children, since 2016.



TRANSPORTATION

Gas cards, bus passes, & car donations help families get to jobs and school.

SHELTER



HOSPITALITY

200,000 volunteers create a temporary home for the families we serve.

CASE MANAGEMENT

Our 200+ Affiliates provide comprehensive guidance and resources.



COMMUNITY ENGAGEMENT

6,000 congregations & organizations serve families at 1/3 traditional shelter cost.

STABILIZATION

HOUSING

Innovative solutions like tenancy training, rapid-rehousing, & home ownership.



FINANCIAL CAPABILITY

Creating the foundation for sustainable financial independence.



CAREER PATHWAY

Preparing families for professional success in a rapidly changing economy.



A holistic solution to family homelessness ☆

Our Impact 2013-Present

- Prevented/diverted *over 2,500 families with children* from homelessness.
- Engaged nearly 1,000 volunteers and over 30 congregations to be part of the solution.
- Collaborated with 100 local partners to address the affordable housing issue and alleviate barriers to stable housing.
- Leveraged national relationships with Bombas, Sesame Street, Belk, Moe's, Distributing Dignity, Clayton Homes, Kaboom, Woodforest Bank, and National Association of Realtors.
- Assisted 87% of families experiencing homelessness in moving into stable housing in an average of 36 days.
- Stabilized 88% of our families so that they have remained housed a year after exiting shelter.
- Provided 18,471 bed nights through donated space from community partners.
- Served 55,413 meals through volunteers.
- Dispersed \$132,616 of financial assistance to keep nearly 300 families housed.

We want Firehouse #1 to be home!

How will space be used

- Day location for homeless families in shelter program
- Meeting place for case management for all three programs
- Meeting space for agency collaboration
- Storage of family belongings
- Storage of donations for families moving into housing
- Location for weekly life skills classes
- Laundry facilities for shelter program
- Showers for shelter program
- Kitchen for shelter program
- Computer access for all programs
- Play areas
- Ample parking for families, volunteers and staff
- Secure outside play area for children
- Potential cold night shelter location for families with children*

How will the community benefit?

- Our new Resource Center at the Firehouse would :
 - Decrease transportation barriers since it is along a bus route
 - Increase use of valuable local resources since it is close to library, museum, downtown
 - Increase accessibility of services since it is located centrally in the county
 - Increase collaborations due to close proximity to providers, avoiding costly duplication of services
 - Increase potential for multiple agencies to work out a shared space
 - Expand opportunities for community classes and higher learning opportunities

Request

- City Council of Cocoa:
 - Consider a long-term lease for the administrative portion of the Firehouse that would revert back to the City if we no longer wanted or needed the building.
 - Maintain control of the bays for use by CPD for vehicle/evidence storage and community collaborations.
 - Discuss potential future use of bay(s) for community classrooms, agency co-locations, and a potential cold night shelter for families with children should they become available at a later date.

Expectations

- Family Promise of Brevard:
 - FPOB would fund the necessary renovations to operate out of the administrative portion of the Firehouse through donations and existing community partnerships.
 - FPOB would be responsible for maintenance and up keep of the property like we have done for the past 7 years in our current space.
 - FPOB would work closely with the City of Cocoa to address unmet community needs and report impact of use of space on a regular basis to leverage funding for services for the residents of Cocoa.
 - FPOB would ensure a safe location for families. Location would NOT BE a walk-in center or duplicate existing resources within the City.
 - FPOB would continue to prioritize families that could not be served elsewhere in the City or County.

Why lease to Family Promise?

- 2/3 of the families we serve are from the central area.
- 73% of Cocoa families below ALICE (earn above the Federal Poverty Level, but not enough to afford a bare-bones household budget).
- The number of families expected to need assistance after COVID-19 is projected to double based on our data over the past three months.
- Of the over 1,500 Cocoa calls to 211 from this past year for housing instability, 60% of those callers were directly referred to Family Promise of Brevard.
- We have a 7-year history of making structural improvements to our existing Resource Center through in-kind donations of wood flooring, interior/exterior paint, new appliances, structural enhancements, playground equipment, fencing, shower, driveway resurfacing, deck maintenance, and daily supplies.

We will triple your donation



Timeframe

- Timeframe –
 - Current location expires – March 2021
 - Estimated time of remodel for FD Station-3 months
 - Estimated cost of remodel for FD Station- \$199,000
 - Committed resources to date
 - Karen Shea Designs
 - River Tree Builders
 - Brothers & Son Construction
 - Home Aid Orlando
 - Community Foundation for Brevard



3765 Oak Lane
Melbourne, FL 32934
321-961-9966

Scale: 1/4" = 1'-0"

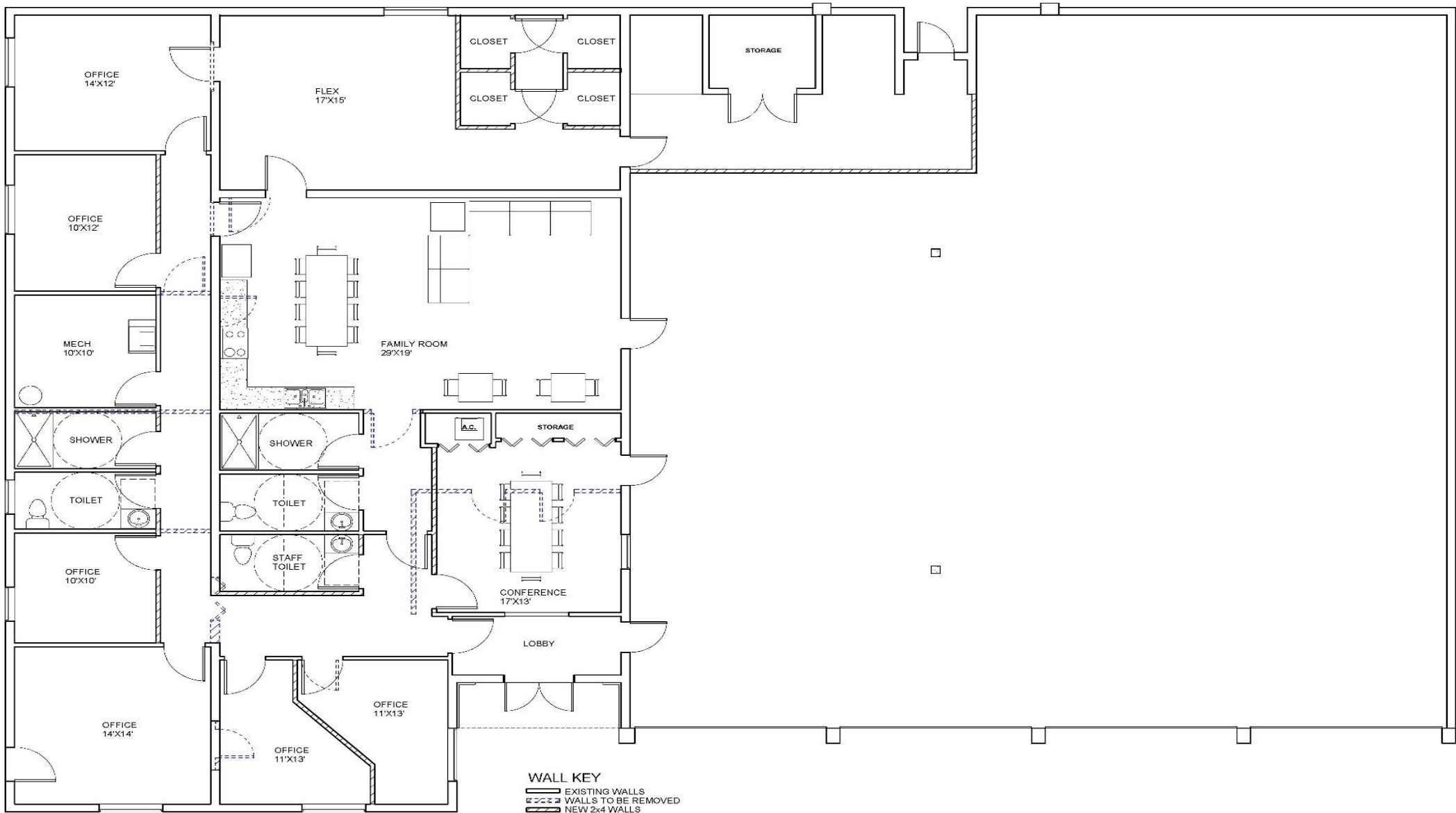
Date: 05/29/20

Project

FAMILY PROMISE PROPOSED

Sheet Number

A201



We empower families. We build communities. We create solutions.

We keep families together with their children.

We offer shelter. We offer hope.

We offer home